



# Danmar Products

Equipping people. Enhancing lives.

A TRUSTED MANUFACTURER OF HELMETS SINCE 1967.

(p) 800-783-1998  
(f) 734-761-8977  
[sales@danmarproducts.com](mailto:sales@danmarproducts.com)

221 Jackson Industrial Dr.  
Ann Arbor, MI 48103  
[www.danmarproducts.com](http://www.danmarproducts.com)

# TABLE OF CONTENTS

■ About Us	Page 3
■ Helmets	Pages 4 - 8
■ Anatomy of a Danmar Helmet	Page 10
■ Helmet Sizing & Selection Information	Page 11
■ Custom Helmet Chart	Page 12
■ Specifications for Custom Fabricated Helmets	Page 13
■ Head Supports	Pages 14 - 15
■ Chest Supports	Page 16
■ Instructions for Proper Sizing of Head Supports	Page 17
■ Swimming for Recreation & Therapy	Pages 18 - 24
■ Swimming Accessories & Replacement Parts	Pages 24 - 25
■ ADL Recreation & Therapy	Pages 26 - 33
■ Helmet, Helmet Accessory & Replacement Items	Pages 34 - 37
■ Helmet Modifications	Pages 38 - 42
■ Custom Colors & Patterns	Pages 43 - 44
■ Supportive Positioning, Modifications, & Accessories	Pages 45 - 50
■ Products for Building & Repairs	Pages 51 - 53
■ Product Index by Item Number	Pages 54 - 55



## Hidie Bowman

### CEO

Our helmets are light, ventilated, shock-absorbent, and offer varying degrees of coverage. Our standard soft and hard shell helmets can be modified many ways—from a different buckle to a full face guard. Offering many types of helmets and options, our helmets can provide the exact protection you need and where you need it. Our experience through the years has led us to develop many solutions to unique needs of the user. This could be additional and extended padding, custom strapping systems, alternative ear slings—you tell us what the needs and problems are, and we can guide you to the perfect protective helmet.

The designs of our supportive/positioning aids, particularly chest and head supports, have the unique ability to give just the right positioning to fully engage in various activities of daily living, social interactions, and general recreation.

Our aquatic therapy equipment truly accommodates ALL different levels of ability in the water, allowing for progressive swim development. We have swimming aids made for non-ambulatory individuals, individuals with poor head or trunk control, and more.

We manufacture all our products—protective helmet solutions, supportive/positioning aids, and therapeutic swim aids—right here in the USA (Ann Arbor, MI). We proudly handcraft our items start to finish with the end user in mind. Over the last 55+ years, we have maintained our commitment to manufacture products prioritizing safety, function, and most of all, comfort.

Hidie has been employed at Danmar Products since 2005 where she worked her way up to General Manager. She then became part owner in 2015 and she became sole owner of the company in 2020. Her husband (Roger), son (Cody), and daughter-in law (Amy) then stepped in to managing roles of the company.

Danmar Products is your source for protective helmet solutions, supportive/positioning aids, and therapeutic swim aids. Trusted by professionals, suppliers, and individuals since 1967—we pride ourselves on quality, dependable equipment to meet your needs.

No frills here; just extraordinary products for special needs. From simple designs to custom colors and modifications; each helmet can be customized to create a one-of-a-kind product based on your needs and specifications. From mild cases to severe, adult to pediatric, we have a full range of sizes and options to fit the needs of the individual. Not only do we take pride in our products themselves, but our caring and compassionate team is here to help you get exactly what you are looking for in a special needs item.



**Roger Bowman**  
President



**Cody Bowman**  
Vice President



**Amy Bowman**  
COO



## 9820 SOFT SHELL HELMET

This lightweight helmet is made from ½" thick shock-absorbent foam that is fully ventilated without compromising head coverage. There is no danger of the face encountering anything hard or sharp as there is no hardware in the foam. Our vinyl coating is easy to clean using just soap and water. Comes with an easily adjustable snap-closure chinstrap.

**Sizes:** Infant, XXS, XS, S, M, L, XL, or XXL.

**Colors:** Casa Tan, Pink, Royal Blue, and Black. Colors for upcharge: Baby Blue, Bright Blue, Teal, Maroon, Electric Green, Forest Green, Purple, Almond, Yellow, Bright Red, Orange, Hot Pink, Lavender, White and Gray.

**Custom colors and/or modifications to any product require up to 7-10 days for fabrication. Custom and/or modified items are not returnable.**

\* Add item(s) 9823 Chin Guard (Page 35) and/or item 3468 Foam Visor (page 41) for extra protection & impact resistance.





## 9821 HARD SHELL HELMET

This lightweight helmet is made from shock-absorbent foam that lines a hard, plastic, ventilated shell for superior comfort and durability. The foam is coated in vinyl, so it is easy to clean using just soap and water. Comes with an easily adjustable snap-closure chinstrap. Outer hard-shell color comes standard in a creamy White **EXCEPT** for Black foam, which comes standard with a Black outer hard shell.

**Sizes:** XXS, XS, S, M, L, XL, or XXL

**Colors:** Casa Tan, Pink, Royal Blue, and Black. Colors for upcharge: Baby Blue, Bright Blue, Teal, Maroon, Electric Green, Forest Green, Purple, Almond, Yellow, Bright Red, Orange, Hot Pink, Lavender, White and Gray.

**Custom colors and/or modifications to any product require up to 7-10 days for fabrication. Custom and/or modified items are not returnable.**

\* Add item(s) 9823 Chin Guard (Page 35) and/or item 3468 Foam Visor (page 41) for extra protection & impact resistance.



## 9829 FULL COVERAGE HELMET

This lightweight helmet is made from shock-absorbent foam that is fully ventilated. It's coated in vinyl, so it's easy to clean using just soap and water. There is no danger of the face encountering anything hard or sharp as there is no hardware in the foam. It's made from slightly thicker foam than our 9820 Soft Shell Helmet to provide greater impact resistance. The design was also modified from the original to provide extra coverage to the temples, cheeks, ears, and nape of the neck. We feature a wide range of custom options, which we are happy to discuss with you, so your individual needs are met.

Comes with your choice of easily adjustable snap or Velcro closure chinstrap.

**Sizes:** Infant, XXS, XS, S, M, L, XL, or XXL.

**Standard Colors:** Casa Tan, Pink, Royal Blue and Black. Custom foam colors are available see page 43.

Custom colors and/or modifications to any product require up to 7-10 days for fabrication. Custom and/or modified items are not returnable.

\*Add item(s) 9823 Chin Guard (Page 35) and/or item 3468 Foam Visor (page 41) for extra protection & impact resistance.



## 9822 HARD SHELL HELMET WITH FACE GUARD

When you need full coverage this model offers the best features. A clear, polycarbonate face guard is attached to a lightweight helmet, which is made from shock-absorbent foam inside a hard, ventilated, plastic shell. The foam is coated in vinyl, so it's easy to clean using just soap and water. It has an eye level opening (1"X 6") for unobstructed vision and a mouth opening (1"x 3 3/4") for maximum ventilation. The bottom edge is lined with a strip of soft foam to help protect the chin. We feature a wide range of custom options which we are happy to discuss with you so that your individual needs are met. Comes with an easily adjustable snap-closure chinstrap.

**Sizes:** XXS, XS, S, M, L, XL, or XXL.

**Standard Colors:**

Casa Tan, Pink, Royal Blue and Black.

Custom foam colors are available as an upcharge see page 43. Outer hard shell comes standard in a creamy White EXCEPT when ordering Black; Black foam comes standard with a Black outer hard shell.



## 9824 HARD SHELL HELMET WITH FACE BAR

This model is a great option when you need facial coverage. A clear polycarbonate face bar is attached to a lightweight helmet-which is made from shock-absorbent foam-inside a hard, ventilated plastic shell. The foam is coated in vinyl, so it's easy to clean using just soap and water. We feature a wide range of custom options, which we are happy to discuss with you so that your individual needs are met. Comes with an easily adjustable snap-closure chinstrap.

**Sizes:** XXS, XS, S, M, L, XL, or XXL.

**Standard Colors:** Casa Tan, Pink, Royal Blue and Black.

Custom foam colors are available as an upcharge see page 43. Outer hard shell comes standard in a creamy White EXCEPT when ordering Black; Black foam comes standard with a Black outer hard shell.

\*Add item(s) 9823 Chin Guard (Page 35) and/or item 3468 Foam Visor (page 41) for extra protection & impact resistance.



## 9825 DELUXE HARD SHELL HELMET

This lightweight helmet is made from shock-absorbent foam that lines a hard, ventilated plastic shell for superior comfort and durability. This sporty helmet features a decorative visor and an easily adjustable snap-closure chinstrap with a sporty rubber chin cup. The foam is coated in vinyl, so it's easy to clean using just soap and water. We feature a wide range of custom options, which we are happy to discuss with you so your individual needs are met.

**Sizes:** XXS, XS, S, M, L, XL, or XXL.

Comes standard with Black foam and a Black outer hard shell; Casa Tan is also available but requires 5-7 business days for fabrication.

The soft rubber chin cup aids with fit and adds a sporty look. The visor is for decorative purposes only.



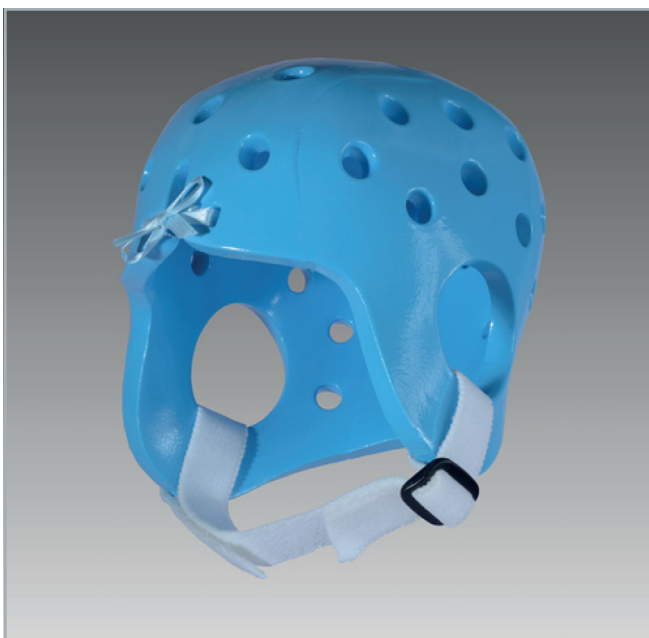
## 9817 HALO HELMET

For individuals who do not need full head coverage, this helmet is ideal. The open top is very cool and the shock-absorbent foam is lightweight. We've added a band of 5/8" foam over the forehead for extra impact resistance. The top has adjustable crisscross straps to help keep the helmet stable and aid in positioning. It's coated in vinyl, so it's easy to clean using just soap and water. We feature a wide range of custom options, which we are happy to discuss with you so your individual needs are met. Comes with an easily adjustable snap-closure chinstrap.

**Sizes:** XXS, XS, S, M, L, XL, or XXL.

Halo helmets are only stocked in Royal Blue, and Casa Tan, in sizes S, M & L. All other sizes and/or colors require up to 7-10 business days for fabrication.

\*Add item(s) 9823 Chin Guard (Page 35) and/or item 3468 Foam Visor (page 41) for extra protection & impact resistance.



## 9836 NEWBORN CAP

If your newborn baby's head is at risk from bumping, keep it safe with the Newborn Cap. This ultra-lightweight helmet is made from soft, 3/8" shock-absorbent foam and is fully ventilated. It's coated in vinyl, so it's easy to clean using just soap and water. There is no danger of the face encountering anything hard or sharp as there is no hardware in the foam. A soft chinstrap holds the cap in place.

Standard Colors are Pink and Baby Blue.

Custom foam colors are available as an upcharge see page 43 and requires up to 7-10 days for fabrication.

**Small:** A. 13 1/2" B. 9 3/4" C. 7 1/2".

**Medium:** A. 15" B. 10 3/4" C. 8".

**Large:** A. 16" B. 11 1/4" C. 8 1/2".



## 9830 CLEAR HELMET

Professionals working with patients needing head coverage after surgery can place positioning pads around the inside of this clear shell. In an area of recent surgery for example, pads would be placed around a wound/surgical site to keep the helmet shell elevated and away from the affected area. A clear polycarbonate shell, edged with soft foam, is then lined with self-adhesive foam pads in various thicknesses, and ventilation holes are added. The shell and vinyl-coated foam pads can be easily cleaned with soap and water. If this helmet must be worn in bed, it can be customized by removing the back of the shell creating a "half helmet".

**Size:** One size up to 30" circumference.

**Color:** Clear with Casa Tan pads.

**Options:** Order with foam pads attached or not attached; custom size pads are available for an additional charge.

See page 11 for the helmet-sizing chart to determine what size to order. Custom colors and/or modifications to any product require up to 7-10 business days for fabrication. Custom and/or modified items are not returnable.





## 9708 SOFT COMFY CAP

Our lightest, coolest helmet yet! This soft, lightweight helmet is made from compression-molded foam and weighs just 3 ounces. The stylish head hugging design offers a uniquely comfortable fit. The Soft Comfy Cap provides maximum ventilation and retains limited body heat. It's easy to clean using soap and water. Sizing based **ONLY** on circumference measurements from the helmet-sizing chart. Standard color is Silver Gray for sizes XS, S, M and L. Metallic Blue available for sizes S, M and L, and does require additional fabrication time. Comes with an easily adjustable snap-closure chinstrap. **\*\*XS size ONLY available in color Silver Gray.**

Size	Circumference Range
X-Small	19" - 19.5"
Small	21" - 21.5"
Medium	22" - 22.5"
Large	23" - 23.5"



## 9709 HARD SHELL COMFY CAP

This 11.5 oz. helmet is our lightest Hard Shell made of a compression-molded inner foam liner attached to a rigid plastic exterior. This stylish design provides the same comfortable fit as the soft model. The Hard Shell Comfy Cap is extremely well-ventilated and retains limited body heat. It is easy to clean using soap and water. **\*Cannot be customized or modified.**

Standard color is Silver Gray with cream or black shell. Comes with an easily adjustable snap-closure chinstrap.

Size	Circumference Range
Small	21" - 21.5"
Medium	22" - 22.5"
Large	23" - 23.5"



## 9910 SOFT COMFY CAP WITH DESIGN

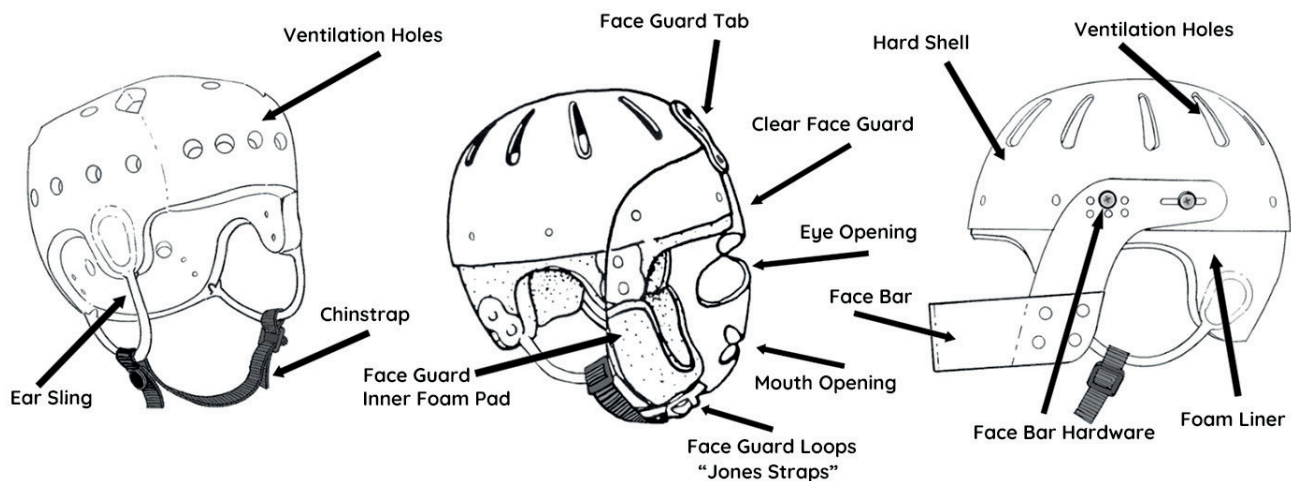
A soft, lightweight helmet made of compression molded foam. The stylish head hugging design offers a uniquely comfortable fit. The Soft Comfy Cap allows for maximum ventilation and retains limited body heat. Easy to clean with soap and water, towel dry. Weight: 3 oz. **\*Cannot be customized or modified.**

**Color:** Camo or Butterfly. Comes with an easily adjustable snap-closure chinstrap.

Size	Circumference Range
Small	21" - 21.5"
Medium	22" - 22.5"
Large	23" - 23.5"



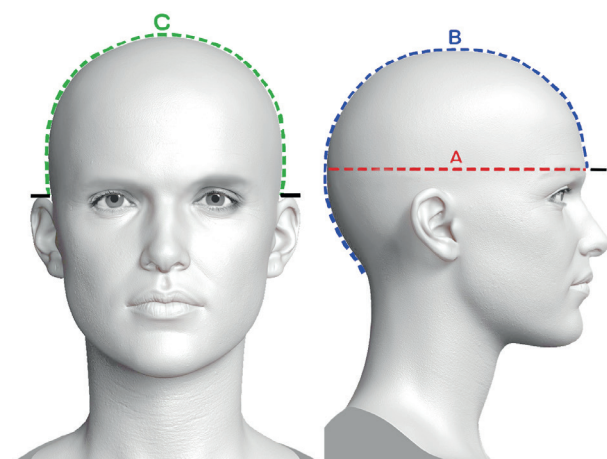
# ANATOMY OF A DANMAR HELMET



## WARNING NOTICE:

WHILE WE BELIEVE THAT HEADGEAR CAN SUBSTANTIALLY REDUCE THE RISK OF HEAD INJURY, WE EMPHASIZE THAT THERE IS NO KNOWN DEVICE FOR PREVENTING ALL INJURIES. ONLY YOU, THE CONSUMERS, ARE IN A POSITION TO EVALUATE THE PARTICULAR NEEDS OF THE INDIVIDUAL CLIENT IN EACH ENVIRONMENT. IT IS ESSENTIAL THAT PROFESSIONAL AND MEDICAL EXPERTISE BE UTILIZED IN RENDERING DECISIONS REGARDING HEADGEAR USE.

## HELMET SIZING AND SELECTION INFORMATION



Since proper fit is important for the effectiveness of the helmet as well as comfort of the person wearing headgear, measurements should be determined by professional personnel.

Measure the head circumference (all the way around) (A) at the eyebrow level. The Occipital measurement (B) is taken from the eyebrow level to the back of the head at the point that the helmet is to end. For (C) measure from the top of one ear over the head to the top of the other ear. If for some reason the measurements do not fall within the above guidelines, or if there are other considerations to be taken into account, please refer to the next page for information on Custom Helmets, or feel free to call us for help with sizing at (800) 783-1998.

### (A) CIRCUMFERENCE RANGE

	Soft Shell	Hard Shell
Infant	16 ¼ – 17	Not available in infant
XX-Small	17 ½ – 18 ¼	18 ½ – 19 ¼
X-Small	19 – 19 ¾	19 ¼ – 20
Small	20 ¾ – 21 ½	20 ½ – 21 ¼
Medium	21 ½ – 22 ¼	21 ½ – 22 ¼
Large	23 – 23 ¾	22 ½ – 23 ¼
X-Large	24 – 24 ¾	24 ½ – 25 ¼
XX-Large	25 ½ – 26 ¼	26" – 26 ¾

### (B) OCCIPITAL

	Soft Shell	Hard Shell
Infant	11 ½	Not available in infant
XX-Small	12 ¾	12 ¾
X-Small	13 ¾	13 ¾
Small	14 ½	15
Medium	15 ¼	16 ½
Large	16 ½	16 ¾
X-Large	17 ½	17 ½
XX-Large	18 ½	18 ¾

### (C) EAR TO EAR

	Soft Shell	Hard Shell
Infant	8 ¼	Not available in infant
XX-Small	9 ½	9 ¼
X-Small	9 ½"	10
Small	10 ½	11 ¾
Medium	11	12 ½
Large	12	12 ¾
X-Large	13	13 ¼
XX-Large	13 ¾	15

Measurements are in inches.

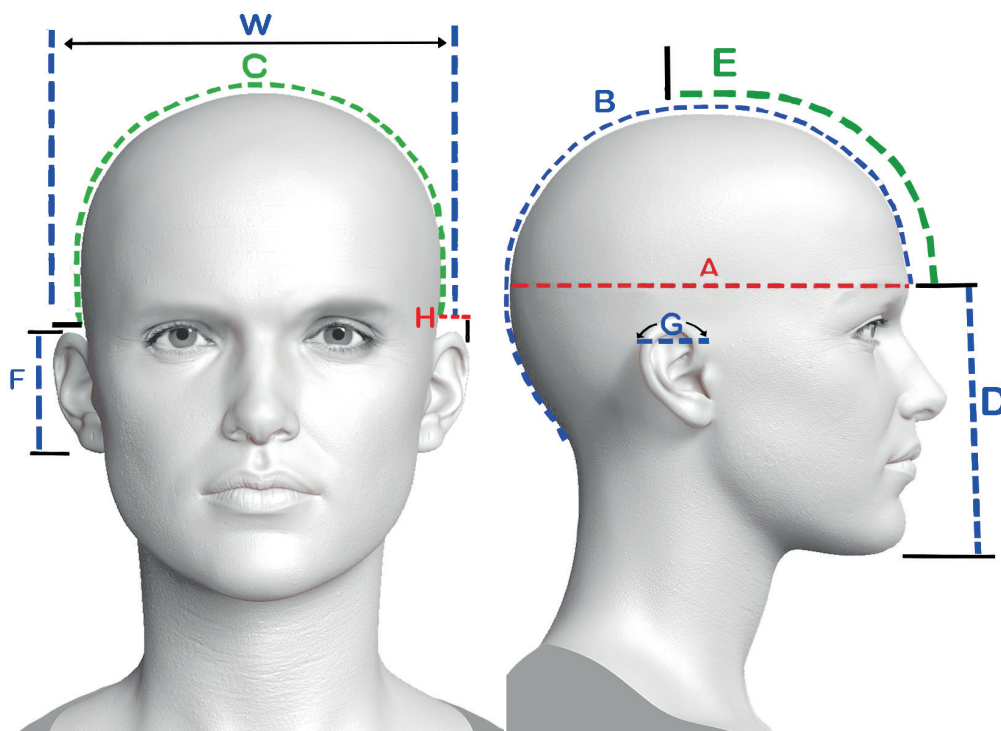
## HEADGEAR SELECTION

Some suggested considerations to use in helping to determine that type of helmet would be suitable for your client are:

- Degree of physical activity.
- Potential for striking surfaces (floor, walls, furniture, etc.).
- Nature of self-abusiveness.
- Severity and frequency of seizures or spasticity.
- Length of time worn.

CUSTOM AND/OR MODIFIED ITEMS ARE NOT RETURNABLE AND REQUIRE ADDITIONAL FABRICATION TIME.

## CUSTOM HELMET MEASUREMENT CHART



**ALL MEASUREMENTS IN INCHES PLEASE**

- (A) CIRCUMFERENCE at the eyebrow level all the way around the head.
- (B) OCCIPITAL from the eyebrow level to the back of the head, going over the top of the head to the point where the helmet is to end.
- (C) OVER THE TOP OF HEAD from the top of the left ear over the top of head to the top of right ear.
- (D) EYEBROWS TO CHIN (for face guard & face bars).
- (E) EYEBROW TO TOP OF HEAD at eyebrow level, following the contour of the head to the point where it intersects with the ear-to-ear measurement.
- (W) WIDTH OF HEAD is measured above the head and is the distance between the ears (use straight edge ruler).

### FOR EAR COVERINGS:

- (F) HEIGHT of ears.
- (G) WIDTH of ears.
- (H) EXTENSION is the distance that ears extend from head.

This page can be reproduced to send in client measurements.

CUSTOM AND/OR MODIFIED ITEMS ARE NOT RETURNABLE AND REQUIRE ADDITIONAL FABRICATION TIME.



## SPECIFICATIONS FOR CUSTOM FABRICATED HELMETS

Due to the unique and individual nature of custom helmets, the following specifications are needed **BEFORE** evaluating the feasibility of fabricating a helmet for special head shapes, sizes, and conditions. Once this data is received, we can then provide a price quotation, as a customization fee will be applied.

1. **MEASUREMENTS** - refer to **CUSTOM HELMET MEASUREMENT CHART** see Page 12.

2. **PLASTER CAST OF HEAD** - (As this step may **NOT** be necessary, consult with a Danmar representative first.) Use Johnson & Johnson plaster bandages or the equivalent. The cast must conform to the areas of the head that are to be covered by the helmet. The edge of the cast will be the edge of the helmet. Ear locations must be clearly marked, as well as the area to be cut out.

3. **PHOTOGRAPHS** - Clearly showing the head with close up of right and left sides, front, back, and a view of the top of the head looking down from above, to see the overall head shape.

4. **SCAN** - Universal 3D file excepted (STL, OBL, AOP, ETC.)

5. **SEND** in a Carved Form from Orthotist.

6. **FACE GUARD OR FACE BAR** - If either of these is requested, please provide the following information: Make a sketch of the face, clearly indicating the eye, nose, and mouth positions, and the measurement from eyebrow level to point of chin.

**NOTE:** Fit may range from snug to slightly loose, because there can be small variations that occur in the manufacturing process, in the raw materials, and/or a shrinkage factor. Hair styles will also affect the fit.

**IMPORTANT:**  
**PLEASE NOTE THAT CUSTOM HELMETS ARE NOT RETURNABLE.**



## SUPPORTIVE POSITIONING



### 6810 HENSINGER HEAD SUPPORT

Revolutionary in the world of cervical collars, this soft foam wraparound collar is designed to brace the head by the jawline. The Hensinger Head support can help maintain mid-line head positioning. Proper head positioning facilitates improved breathing, swallowing, and simplified feeding. It also aids in social interaction and awareness during classroom activities.

The Hensinger is built with a strong yet pliable reinforcement material around the outside of the support. A simple Quick-Release buckle allows easy on/off. The Hensinger Head

Support can be used with a chest support or mounted to a seating system. Vinyl-covered foam is Casa Tan. Blue or Black soft cotton covers come standard.

**Options:** Mounted or Unmounted (Mounted version comes with a mount plate and straps to attach to a permanent seating system or wheelchair).

Size	A.	B.	(A) Neck Circumference. (B) Shoulder to bottom of ear, allowing 1/2" between earlobe and top of head support. Measurements in inches.
X-Small	9"	1"	
Small	12"	1.5"	
Medium	14"	2"	
Large	16"	2.5"	

Custom Lycra covers are available for an upcharge and require 5-7 business days for fabrication see page 47. Can be customized to measure; call Danmar to inquire.





## 6809 HENSINGER HEAD SUPPORT WITH HIGH BACK

The Hensinger Head support can help maintain mid-line head positioning. Proper head positioning facilitates improved breathing, swallowing, and simplified feeding. It also aids in social interaction and awareness during classroom activities. The Hensinger with High Back is built with strong yet pliable reinforcement material around the outside, and is an extra 1" taller in the back. Blue or Black soft cotton covers come standard. The vinyl-coated foam is Casa Tan. **Options:** Mounted or Unmounted (Mounted version comes with a mount plate and straps to attach to a permanent seating system or wheelchair).

Size	A.	B.	(A) Neck Circumference. (B) Shoulder to bottom of ear, allowing 1/2" between earlobe and top of head support. Measurements in inches.
X-Small	9"	1"	
Small	12"	1.5"	
Medium	14"	2"	
Large	16"	2.5"	



## 6833 SWIRL COLLAR

This swirl of soft foam wraps around the neck and has an adjustable Velcro closure at the back, which makes fitting a breeze. Used for minor to moderate head support, this collar encourages easy movement from side-to-side. Because it is not attached, the Swirl can be used with any seating system and by individuals who are ambulatory. When properly fitted, the Swirl should make contact with the chin and jawline. We also offer foam plugs, which provide firmer support for clients who tend to lean in one direction or drop their head forward. **Standard Cover Colors:** Blue, Pink, and Black. **Foam Colors:** White or Black

Size	A.	B.	C.	(A) Neck Circumference. (B) Shoulder to bottom of ear, allowing 1/2" between earlobe and top of head support. (C) with head in a neutral/midline position, measure from bottom of chin to top of the sternum. Measurements in inches.
Infant	7" - 12"	1.25"	1.75"	
Small	10" - 13"	1.5"	2.5"	
Medium	11" - 15"	1.75"	2.75"	
Large	13" - 19"	2"	3"	



## 6826 ANTERIOR HEAD SUPPORT

Help combat chin drop with the Anterior Head Support. It provides firm but gentle lifting of the chin and lateral support of the head. There is a padded roll around the rear strap for a comfortable finish. Soft cloth covers are included over the vinyl-coated foam. This headrest is an important alternative to help meet the positioning needs of those who require some supplemental support. Can also be used with a chest support. Vinyl-covered foam is Casa Tan and standard cover color is Blue.

Size	A.	B.	(A) Neck Circumference. (B) Shoulder to bottom of ear, allowing 1" between earlobe and top of head support. Measurements in inches.
X-Small	8" - 10"	1.5" - 2"	
Small	9" - 12"	2" - 3"	
Medium	11" - 14"	2.5" - 4"	
Large	13" - 17"	3.5" - 5"	



## 6828 SIDE-OPENING HEAD SUPPORT

Secure, soft, and very supportive, this head support opens on the side with a quick-release buckle closure for easy on/off. It provides firm but gentle lifting of the chin, and lateral and occipital support of the head. The closed cell vinyl-coated foam is reinforced in front and back for added strength. The Side-Opening Head Support can be used with a chest support or mounted to a seating system. Vinyl-covered foam is Casa Tan and standard cover color is Blue.

Size	A.	B.	(A) Neck Circumference. (B) Shoulder to bottom of ear, allowing 1" between earlobe and top of head support. Measurements in inches.
X-Small	9" - 10"	2"	
Small	11" - 13"	2.5"	
Medium	14" - 16"	3"	
Large	17" - 18"	3.5"	

Custom Lycra covers are available for an upcharge and require 5-7 business days for fabrication see page 47. Can be customized to measure; call Danmar to inquire.



## 6611 CLEAR CHEST SUPPORT

Almost invisible! Flexible and easy to use, this design has no bulky hardware and is hardly noticeable. This chest support is designed to be comfortable and extremely durable. It offers positioning for individuals that benefit from having their upper body stabilized and hips held at a proper angle. It can be used with most standard, high back, or custom wheelchairs and strollers.

**PLEASE NOTE: THIS PRODUCT IS NOT A RESTRAINT.**

Size		Measure seated, shoulder to hip. Measurements in inches.
Infant	6" - 8"	
X-Small	8" - 10"	
Small	10" - 14"	
Medium	14" - 17"	
Large	17" - 20"	



## 6610 CHEST SUPPORT

We've created a core of moldable material and surrounded it with soft foam to create a comfortable chest support that can be formed to follow your body contours. There are strap attachments on the Yokes for wheelchairs, travel chairs, and strollers. The lap belt has pivot mounts for optimal adjustability.

**PLEASE NOTE: THIS PRODUCT IS NOT A RESTRAINT.**

Size		Measure seated, shoulder to hip. Measurements in inches.
Infant	6" - 8"	
X-Small	8" - 10"	
Small	10" - 14"	
Medium	14" - 17"	
Large	17" - 20"	



## 6615 SPLIT CLEAR CHEST SUPPORT

Almost invisible! Flexible and easy to use, this support design is split in the middle for simple on/off. This chest support is designed to be comfortable and extremely durable. It offers positioning for individuals that benefit from having their upper body stabilized and hips held at a proper angle. It can be used with most standard, high back, or custom wheelchairs and strollers.

**PLEASE NOTE: THIS PRODUCT IS NOT A RESTRAINT.**

Size		Measure seated, shoulder to hip. Measurements in inches.
Infant	6" - 8"	
X-Small	8" - 10"	
Small	10" - 14"	
Medium	14" - 17"	
Large	17" - 20"	



## 6620 MODULAR CHEST SUPPORT

We've surrounded a core of moldable material with soft foam to create a comfortable chest support that can be formed to follow your body contours. The yoke arms pivot, allowing for tailored adjustments for ultimate comfort. The individual pieces of this support are replaceable, so you can adjust the size or swap worn out pieces for new ones. There are strap attachments on the Yokes for wheelchairs, travel chairs, and strollers. The lap belt has pivot mounts for optimal adjustability. Colors are Black or Casa Tan.

**PLEASE NOTE: THIS PRODUCT IS NOT A RESTRAINT.**

Size		Measure seated, shoulder to hip. Measurements in inches.
Small	10" - 14"	
Medium	14" - 17"	
Large	17" - 20"	

Can be customized to measure; call Danmar to inquire.

## INSTRUCTIONS FOR PROPER SIZING OF HEAD SUPPORTS

There are 2 major areas to address when sizing head supports. It is important to work with medical professionals because of the many variables that must be taken into consideration when using any type of head supporting device. Our soft foam is made to allow the individual using the support to benefit from being able to easily move their head to retain function, instead of being very tight, hard, and restrictive. The seating system must always be addressed first, because supporting the head comes after the individual has been properly positioned, taking into account all the variables necessary for meeting their physical and mental needs. The benefits from good head positioning include higher self-esteem, improved bodily functions, and increased social interactions.

1) Take accurate measurements, see corresponding sizing charts.

A) Take neck circumference and round up to the nearest 1/2".

B) Measure vertically between the top of the shoulder to the bottom of the ear lobe and round up to the nearest 1/2", then subtract 1/2" to allow for ear clearance and head movement.

**Note: If there are measurements that do not fit those parameters, a custom size may be needed. Please call to speak with one of our Sales Associates for further clarification. Additional charges will apply and custom products are NOT returnable.**

2) Consider all the variables-some examples are as follows:

A) If a chest support is used with the head support, subtract its thickness from the "B" measurements. Straps or trunk supports that are 1/8" or less should not affect the fit, but anything thicker than 1/8" should be taken under consideration.

B) Decisions as to mounting options should be made depending on the type of seating system being utilized.

C) Consider additional options for the increased comfort and functional abilities of the person using the headrest, such as a size reducer.

### Support Selection Considerations

Our products are designed to enrich the lives of their users, therefore contributing to the optimization of the individual's full potential in educational, social, and recreational settings. They can be used during classroom activities, while eating, and when used properly, in transportation. Proper selection of a head support requires that an onsite, professional evaluation take place, including the following factors:

A: Breathing should be improved or maintained at the present level.

B: Swallowing/drainage should be improved or maintained at the present level.

C: Field of vision/eye contact should be improved or maintained at the present level.

D: Head contact areas - Head supports maintain the head in a mid-line position. A portion of the neck/head area that contacts the support is considered the "base area." Determining that base area helps provide support and maximum comfort. Improper base area selection can impede breathing, swallowing, blood flow, and could possibly cause jaw discomfort.

E: Body Positioning-Head support must only be used in conjunction with proper trunk support, if trunk support is needed.

F: Head control should be evaluated from little or no head control to forward, rear or side-thrusting, and/or random movements.

### WARNING NOTICE:

**MISAPPLICATION OR MALFUNCTION OF THIS DEVICE MAY CONTRIBUTE TO SERIOUS INJURY AND/OR DEATH. FOLLOW ALL INSTRUCTIONS CAREFULLY. KEEP STRAPS IN ADJUSTMENT. REPLACE ALL WORN, DAMAGED, OR BROKEN PARTS. THIS DEVICE IS FOR ASSISTIVE SUPPORT ONLY. NEVER USE AS A RESTRAINT OR FOR RESTRICTING NORMAL MOVEMENT.**





## SWIMMING FOR RECREATION & THERAPY

**To help you decide on the type of equipment and the appropriate size for the individual, here are a few basic considerations:**

1. Individual's medical condition, considering the type and severity of the disability.
2. Amount of trunk and head control that the individual exhibits.
3. Amount of spasticity/rigidity exhibited.
4. Age, weight, and amount of body fat that contributes to natural buoyancy.
5. Teaching goals which are desired, i.e. maximum or minimum flotation for a full range of motion in the extremities.
6. Versatility of equipment: our swim aids are designed for all age groups and may be adapted to changing levels of proficiency.

### **IMPORTANT:**

**Supervision by competent personnel is a necessity while flotation equipment is in use.**

Our customs department fabricates many styles of flotation equipment designed by adapted aquatic instructors for use by their clients. We have over 55+ years of experience in the field and would take pride in making your design a reality.





# 8725 HEAD FLOAT

Independence for everyone in an aquatic setting makes this a truly valuable aid. Constructed from Ensolite® marine flotation foam, the Head Float will not sink or absorb water, even if cut or punctured. Therapy is made easier for individuals with reflex domination, and there is no need to support the head manually, so hands are free. Superb cushioning design allows the head to rest without pressure on the spinal column, encouraging neutral positioning. This may also be customized.

**Neck circumference:** Medium - 13", and Large - 15".

**Color:** Yellow. All other colors are available as an upcharge see page 43.

**IMPORTANT:**  
Supervision by competent personnel is a necessity while flotation equipment is in use.

Size	Weight	Product Dimensions
Small	20 - 30 lbs.	16"L x 12"W x 1.5"T
Medium	40 - 85 lbs.	20"L x 13"W x 2"T
Large	60 - 175 lbs.	22"L x 14"W x 3"T

Please Note: Swim aid is packed using corn starch to prevent the vinyl parts from sticking together. This can easily be washed off with warm soapy water. When repacking swim aid allow them to dry, then use either corn starch or baby powder to prevent sticking. All swim aids have a one-year warranty.





## 8735 COMBINATION HEAD FLOAT & STABILIZER BAR

When working with people who may hyper-extend or tip backwards or sideways, this Combination Head Float & Mini Stabilizer Bar helps keep the face out of the water. This works well not only for swimmers with Athoid CP, but also for those who roll sideways and backwards. Now they can stretch and turn their heads when interacting with others without tipping or rolling. The float may be adjusted for individuals with shorter necks by beveling the neck area.

**Neck circumference:** Medium - 13", and Large - 15".

**Color:** Yellow; all other colors are available as an upcharge see page 43.

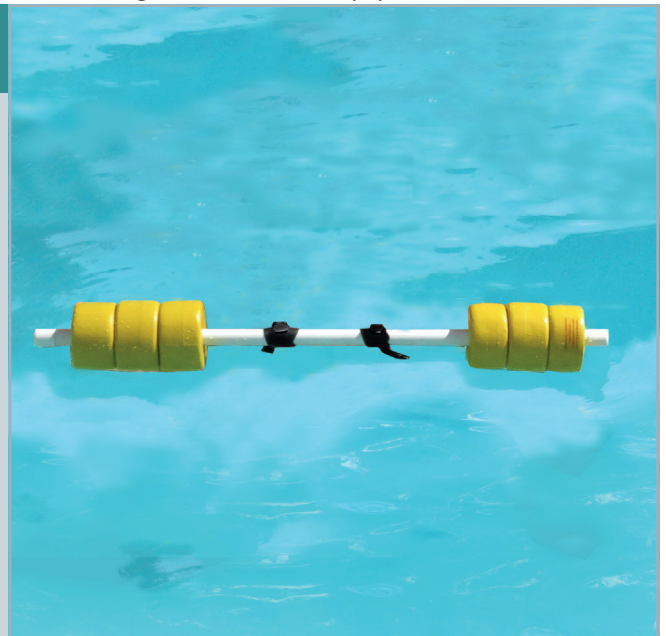
Size	Weight	Product Dimensions
Medium	40 - 50 lbs.	20"L x 13"W x 2"T
Large	60 - 175 lbs.	22"L x 14"W x 3"T

**IMPORTANT:** Supervision by competent personnel is a necessity while flotation equipment is in use.

## 8729 STABILIZER BAR

Our Stabilizer Bar comes in one size (3' length) and is lightweight! It helps with maintaining balance and equilibrium during walking/gaiting pool exercises, as used in some stroke recovery therapies. It is also great for resting on or extending out in front of you for kicking drills, as well as in workouts for individuals with mild arthritis. The amount of flotation can be adjusted by adding or removing rings; additional rings are available if more flotation is desired.

**Color:** Yellow; all other colors are available as an upcharge see page 43.



## 8724 SWIM RINGS

Create your own personal flotation device with these versatile rings! Sets may be snapped together for neck, chest, torso, or body support. Minis can be used individually and together on arms and/or legs, as well as along with other swim aids. Individual rings can be added or removed to increase or decrease the amount of flotation, as well as to adjust for comfort. Set comes with a standard 43" strap, Minis have a 12" strap, and 20 individual rings.

Ring diameter is determined by size: Mini - 2", Small - 2 1/2", Medium - 3 1/2", and Large - 4 1/2". An extra-long 48" strap is available per request at no extra charge.

**Color:** Yellow; all other colors are available as an upcharge see page 43.

Size	Weight
Mini	2 sets
Small	20 - 30 lbs.
Medium	30 - 80 lbs.
Large	80 - 300 lbs.

Please Note: Swim aid is packed using corn starch to prevent the vinyl parts from sticking together. This can easily be washed off with warm soapy water. When repacking swim aid allow them to dry, then use either corn starch or baby powder to prevent sticking. All swim aids have a one-year warranty.



## 8723 SECTIONAL RAFT

For individuals who are insecure in the water or are non-ambulatory, the Sectional Raft supports and cradles the body. Rather than holding a person on top of the water, our raft allows water to flow around the body, which enables interaction with the environment and helps reduce anxiety. The head pad is reversible with lateral supports for slight head/neck support. Shoulder straps snap over the arms for an easy fit, providing room for arm propulsion and preventing the body from rolling. The bottom row of sectional pieces can be folded under for greater range of motion in the lower body.

**Color:** Yellow; all other colors are available as an upcharge see page 43.

**Note:** Care should be taken to watch for air chill on the parts of the body above the water surface. To prevent this, towels should be placed over the body.

Size	Body Height	Product Dimensions (front section)
Small	36" - 54"	38"L x 22.5"W
Medium	54" - 74"	50"L x 32"W

**IMPORTANT:** Supervision by competent personnel is a necessity while flotation equipment is in use.

## 8730 COMFORT MAT

This mat means comfort! Use in the many situations where foam padding would be welcome. Place at the pool's edge to ease entry/exit. In the shower, these moisture-proof mats offer a soft floor covering. In the locker room, they insulate against cold tile floors and provide changing comfort. They make a great flotation raft too.

**Color:** Yellow; all other colors are available as an upcharge see page 43.

Size	Product Dimensions
One Size	25"L x 40"W x 1"H



## 8727 DOLPHIN FLOAT SYSTEM

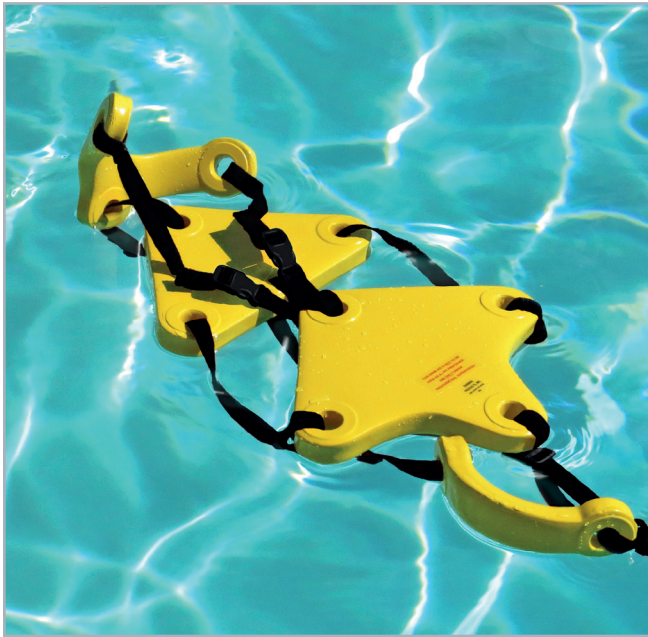
The Dolphin is ideal for physically involved individuals who have head/trunk control but may need to compensate for uneven weight. Using the side pads helps minimize a user's tendency toward lateral rotation. The front chest pad provides additional lift and is removable. Item #7732 crotch strap can be added and used to keep the Dolphin in position while swimming.

**Color:** Yellow; all other colors are available as an upcharge see page 43.

Size	Weight	Product Dimensions
Small	30 - 75 lbs.	19"L x 12"W
Large	75 - 200 lbs.	22"L x 14"W

Please Note: Swim aid is packed using corn starch to prevent the vinyl parts from sticking together. This can easily be washed off with warm soapy water. When repacking swim aid allow them to dry, then use either corn starch or baby powder to prevent sticking. All swim aids have a one-year warranty.





## 8720 DELTA SWIM SYSTEM

The Delta Swim System is designed to aid in progressive swimming development, and is perfect for ambulatory individuals with postural balance and arm control. The front and back sections are designed to enhance the body's center of buoyancy, and the unique crotch strap design keeps the Delta in place. It is ideal for rehabilitation involving walking in deep water, running, and aerobic exercises. The Delta can also be used to pinpoint muscle strengthening during resistance training. This component system is made with removable pieces; as your swimming skills improve, pads can be removed to help you achieve independence. For additional buoyancy or equalization of balance, see pad plus item #8721. **Color:** Yellow; all other colors are available as an upcharge see page 43.

Size	Weight	Product Dimensions (front section)
Small	20 - 30 lbs.	11"L x 13"W
Medium	30 - 80 lbs.	15"L x 17"W
Large	150 - 240 lbs.	19"L x 20"W

## 8721 PAD PLUS

Offered to modify the Delta Swim System and Tri-Swim, the Pad Plus may be attached to the front section to add buoyancy and raise the body position in the water.

**Color:** Yellow; all other colors are available as an upcharge see page 43.

Size	Weight	Product Dimensions
Small	50 - 65 lbs.	8"L x 6"W
Medium	135 - 155 lbs.	11"L x 8"W
Large	210 - 240 lbs.	15"L x 10"W



**IMPORTANT:** Supervision by competent personnel is a necessity while flotation equipment is in use.



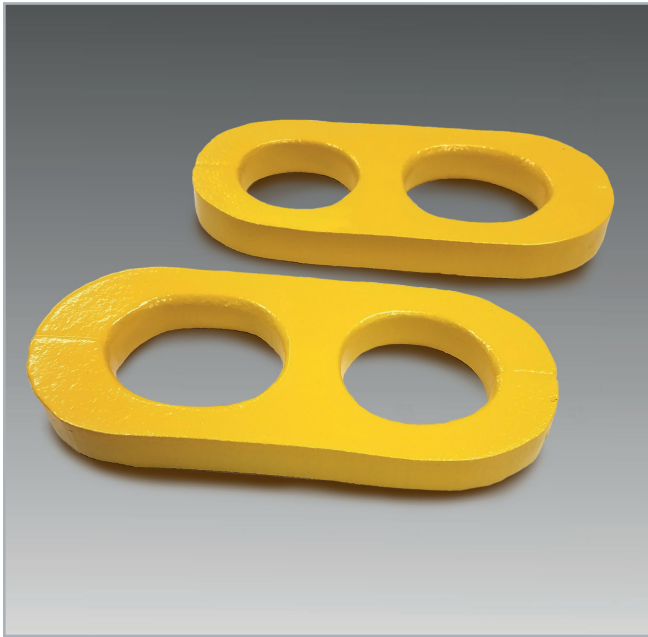
## 8728 TRI-SWIM

A favorite in geriatric or rehab swim programs, the Tri-Swim gives supplementary support for those who have some swimming skills. A moderate amount of lift helps maintain the body in a traditional swimming position. It has a Quick-Release waist strap for easy on/off. Use it with the Pad Plus item #8721 for additional buoyancy.

**Color:** Yellow; all other colors are available as an upcharge see page 43.

Size	Weight	Product Dimensions
Small	30 - 50 lbs.	8"L x 11"W
Medium	60 - 150 lbs.	9.5"L x 15"W
Large	160 - 210 lbs.	11.5"L x 19"W

Please Note: Swim aid is packed using corn starch to prevent the vinyl parts from sticking together. This can easily be washed off with warm soapy water. When repacking swim aid allow them to dry, then use either corn starch or baby powder to prevent sticking. All swim aids have a one-year warranty.



## 8722 SWIM LOOPS

Designed for use on arms and ankles, our Swim Loops can be isolated to focus on strengthening one area, can be used in conjunction together and with other swim aids to provide supplemental support, as well as in therapy to build strength and confidence. Arm Loops have 2 different sized holes for various arm placement; ankle loops have 2 openings of the same size. This may also be customized.

**Set of 2**

**Color:** Yellow; all other colors are available as an upcharge see page 43.

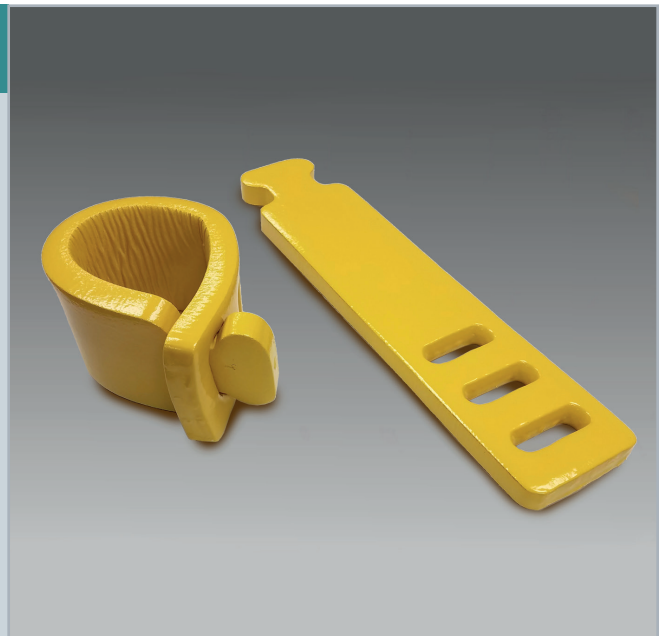
Size	Product Dimensions
Small	1" Thickness
Large	1.5" Thickness

## 8731 LATCH AND SPLASH

There's no hardware in these soft, size-adjustable flotation aids. Simply use on arms and/or legs to provide supplemental support while in water. Beneficial in both therapeutic and recreational settings, the Latch and Splash adds buoyancy and can be used to increase independence in the water.

**One size. Set of 2.**

**Color:** Yellow; all other colors are available as an upcharge see page 43.



**IMPORTANT:** Supervision by competent personnel is a necessity while flotation equipment is in use.



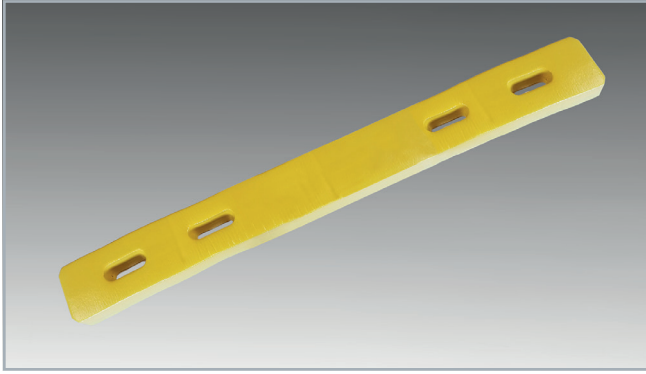
## 8726 SWIM LINKS

For use alone or in conjunction with other swim aids, these Swim Links quickly snap securely together around wrists and ankles with our easy-to-use Quick-Release Buckles, featuring a slide buckle for optional adjustment. Swim Links can also be snapped together for added buoyancy and support; ideal for use in both recreational and therapeutic environments.

**One size. Set of 2.**

**Color:** Yellow; all other colors are available as an upcharge see page 43.

Please Note: Swim aid is packed using corn starch to prevent the vinyl parts from sticking together. This can easily be washed off with warm soapy water. When repacking swim aid allow them to dry, then use either corn starch or baby powder to prevent sticking. All swim aids have a one-year warranty.



### 8733 DANBAR

These versatile foam bars are perfect for work and play! Use them for low-impact exercise and rehab to add stability and resistance, or to leisurely float around the pool.

**One size.**

**Color:** Yellow; all other colors are available as an upcharge see page 43.



### 7731 SECTIONAL RAFT SECTIONS

Sectional Raft Sections with Snap Rings.

**Color:** Yellow; all other colors are available as an upcharge see page 43.

**IMPORTANT:** Supervision by competent personnel is a necessity while flotation equipment is in use.



### 7732 DELTA CROTCH STRAP

Replacement Delta Crotch Strap.

**Sizes:** Small, Medium, or Large.

**Color:** Yellow; all other colors are available as an upcharge see page 43.



### 7733 DELTA OR TRI-SWIM NECK COLLAR

Replacement neck collar for the Delta Swim System or the Tri-Swim System.

**Sizes:** Small, Medium, or Large.

**Color:** Yellow; all other colors are available as an upcharge see page 43.



### 7734 DOLPHIN CROTCH STRAP

Dolphin Crotch Strap.

**Sizes:** Small or Large.

**Color:** Yellow; all other colors are available as an upcharge see page 43.

Please Note: Swim aid is packed using corn starch to prevent the vinyl parts from sticking together. This can easily be washed off with warm soapy water. When repacking swim aid allow them to dry, then use either corn starch or baby powder to prevent sticking. All swim aids have a one-year warranty.





### 7735 SWIM RINGS REPLACEMENT STRAP

Replacement strap for Swim Rings.

**Sizes:** Small, Medium, or Large.  
**Color:** Black.



### 7736 INDIVIDUAL REPLACEMENT RINGS

Individual replacement rings: Pack of 5.

**Sizes:** Mini, Small, Medium, or Large.  
**Color:** Yellow; all other colors are available as an upcharge see page 43.

**IMPORTANT:** Supervision by competent personnel is a necessity while flotation equipment is in use.



### 7737 DOLPHIN REPLACEMENT PADS

Dolphin Replacement Pads.

**Sizes:** Small or Large.  
**Color:** Yellow; all other colors are available as an upcharge see page 43.

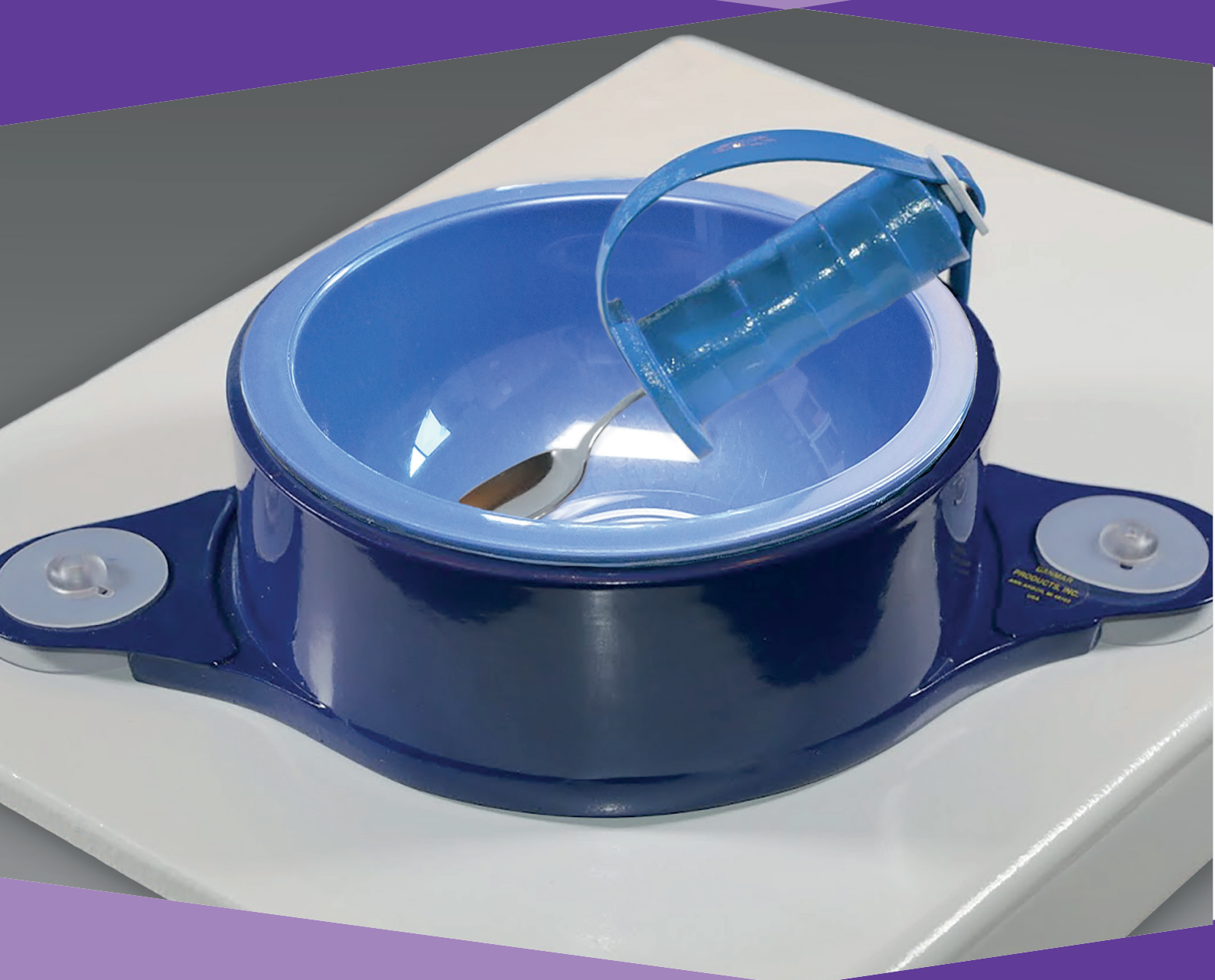


### 7738 REPLACEMENT HEAD FLOAT STRAP

Replacement Head Float Strap.

**Sizes:** Small, Medium, or Large.  
**Color:** Black.

Please Note: Swim aid is packed using corn starch to prevent the vinyl parts from sticking together. This can easily be washed off with warm soapy water. When repacking swim aid allow them to dry, then use either corn starch or baby powder to prevent sticking. All swim aids have a one-year warranty.



## ADL SUPPORT & THERAPY

Activities of Daily Living (**ADLs**) are the basic tasks we need to do every day to survive, like bathing, eating, and toileting. We have dedicated our years to developing products specifically designed to help people become more independent and mobile; from helmets, collars, and swim aids to eating and toileting aids. This next section is dedicated to ADL Support & Therapy. We can customize these products or design something for a specific need—call or e-mail us for more information, we are here for you!





## 6780 MITABLE TOPPER KIT

Comes complete with Table Topper Pad, Bowl or Plate Holder, and Handy Helper with spoon.

**Safety Table Topper Colors:**

Royal Blue, Casa Tan, Pink, and Black.

**Options:** Custom graphics (page 44), and custom colors (page 43).

**Safety Bowl or Plate Colors:**

Royal Blue, Casa Tan, Pink, and Black.

**Handy Helper Sizes and Colors:**

Small - Yellow, Medium - Green, Large - Royal Blue.

Custom colors and/or modifications require up to 7-10 business days for fabrication and are not returnable.



## 6775 MITABLE TOPPER

Our table toppers make hard surfaces safer than ever! The soft foam protects heads and hands from making contact with the hard table surface, and can also protect the surface during art activities. Can also be used in conjunction with our Handy Helper aids, as well as our Safety Plate or Bowl to assist with independent eating. The foam is vinyl-coated and is easily cleaned with warm soapy water. Measures 19" x 15" L.

**Colors:** Royal Blue, Casa Tan, Pink, and Black.

**Options:** Strap, suction cups, custom graphics (page 44), and custom colors (page 43).



## 6770 MIBOWL HOLDER

Our MiBowl design makes self-feeding easier than ever! Added suction cups hold our soft foam in place preventing movement around the table. Use in conjunction with our Handy Helper to aid with even more eating independence. The Bowl Holder comes complete with bowl and our vinyl-coated foam is easily cleaned with warm soapy water.

**Colors:** Royal Blue, Casa Tan, Pink, and Black. **Options:** Additional Blue bowls (Item# 6772), custom graphics (page 44), and custom colors (page 43).



## 6771 MIPLATE HOLDER

Our MiPlate design makes self-feeding easier the ever! Added suction cups hold our soft foam in place preventing movement around the table. The plate features an open section for easy access to scoop food and eat. Use in conjunction with our Handy Helper to aid with even more eating independence. The Plate Holder comes complete with plate and our vinyl-coated foam is easily cleaned with warm soapy water.

**Colors:** Royal Blue, Casa Tan, Pink, and Black.

**Options:** Additional Blue bowls (Item# 6772), custom graphics (page 44), and custom colors (page 43).



## 6763 HANDY HELPER

This simple, snap-on device allows a person to self-feed, resulting in more independence when eating. It's easy to use, soft and comfortable, and comes as shown with a spoon. Our soft, closed-cell foam is vinyl-coated, and easily cleaned with warm soapy water.

**Sizes and Colors:**

**Small:** Yellow - 4.5" Long.

**Medium:** Green - 5" Long.

**Large:** Royal Blue - 6.25" Long.



## 6772 REPLACEMENT MIBOWL OR MIPLATE

Replacement Safety Plate or Bowl for our Item# 6770 MiBowl or Item# 6771 MiPlate. Easily cleaned with warm soapy water.

Specify plate or bowl when ordering.





## 6785 MIMITTS

Our all foam mitts are specially designed to help absorb and deflect the impact when an individual strikes out. They can be applied quickly with Velcro straps when aggressive and/or self-abusive behaviour escalates, protecting both the wearer from injuring themselves on hard surfaces as well as possibly causing injury to person(s) nearby. Ventilated openings add comfort, and our soft yet shock absorbent foam is easily cleaned with warm soapy water. Sold as a pair.

**Please include:** Wrist (circumference), wrist to middle finger tip (length). Measure in inches.

**Colors:** Royal Blue, Casa Tan, Pink, and Black.

**Options:** Custom colors are available as an upcharge see page 43.



## 6760 UTENSIL HANDLE

Versatile and comfortable, these handles will hold eating utensils, personal hygiene items, activity brushes and crayons. Specially contoured sections fit into the hand and have a slide buckle strap that can be adjusted for size.

**Sizes:** Small or Large.

**Colors:** Red, Blue, or Orange.



## 6762 THERAPY HANDLE

Versatile and comfortable, these handles will hold eating utensils, personal hygiene items, activity brushes, and crayons. The Therapy Handle comes with a 1" foam extension to position the thumb and help with grip. Utensils may be placed either in the end of the Therapy Handle or in the thumb extension. Specially contoured sections fit into the hand and have a slide buckle strap that can be easily adjusted for size.

**Sizes:** Small or Large.

**Colors:** Orange-Right and Blue-Left.



## 6764 KNOB HOLDER

This attachment fits into the end of the Utensil or Therapy Handle, and is used for positioning a writing instrument. Using the knob holder makes a pen's angle adjustable so writing is easy. And, no matter what position the hand is in, the user can see what is being drawn or written.

**Color:** Black.



## 6767-A COMBO UTENSIL HANDLE & KNOB HOLDER

This all-in-one tool combines the Utensil Handle, Knob Holder, and Anchor Strap.

**Sizes:** Small or Large.

**Colors:** Orange, Blue, or Red.



### 6767-B COMBO UTENSIL HANDLE & KNOB HOLDER

This all-in-one tool combines the Therapy Handle, Knob Holder, and Anchor Strap.

**Sizes:** Small or Large.

**Colors:** Right - Orange.  
Left - Blue.



### 6766 TOY HOLDER

This simple snap-on device allows a person to interact with a small toy placed in their hands, even without the ability to grasp. Velcro bands are used to hold a toy in place, while webbing attaches around the palm and wrist. It's easy to use and can be adjusted to fit any size hand.

**Sold per pair.**  
**One size fits all.**



### 6765 MIFINGER

This handy tool wraps around 1 or 2 fingers and is both held in place and easily adjusted with Velcro. Use it with a wide range of implements and utensils such as paint brushes, writing implements, drumsticks, eating utensils, and more! Our soft, vinyl-coated foam is comfortable yet sturdy and easy to clean using soap and water.

**Sold by the each.**  
**One size fits all.**  
**Color:** Purple



### 6768 MIWRISTBAND

This versatile band wraps around the wrist to hold a wide range of implements and utensils such as pointers, drumsticks, wooden spoons, bubble wands, eating utensils, and more! The soft foam is comfortable yet sturdy and is both held in place and easily adjusted with Velcro. Our vinyl coating makes it a breeze to clean using soap and water.

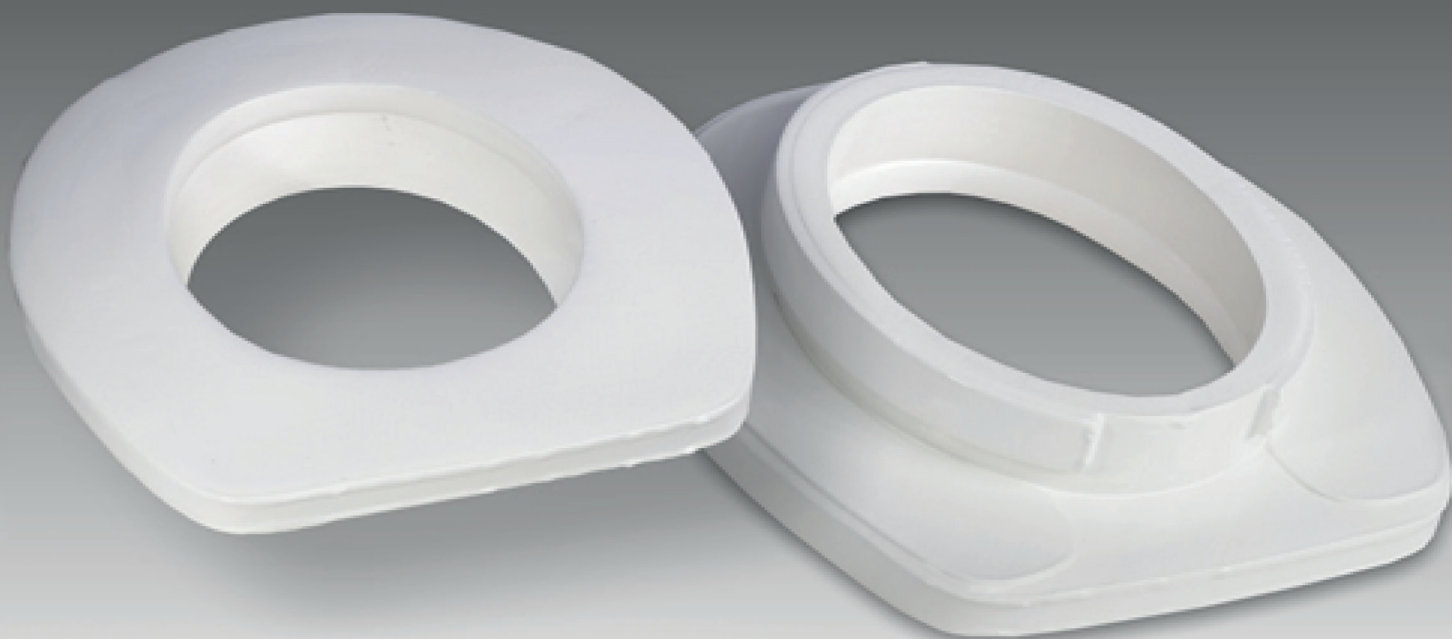
**Sold by the each.**  
**One size fits all.**  
**Color:** Orange



### 6769 MIBAND

This larger version of the MiWristband can be wrapped around the wrists, forearms, arms, and even ankles with a wide range of implements and utensils such as drumsticks, wooden spoons, writing implements, eating utensils, and more! The soft foam is comfortable yet sturdy and is both held in place and easily adjusted with Velcro. Our vinyl coating makes it a breeze to clean using soap and water.

**Sold by the each.**  
**Sizes:** Small-Royal Blue or Large-Red.



## 6850 TOILET SEAT COVER WITH REDUCER RING

Change a cold hard seat into a comfortable one. Our soft foam is vinyl-coated and shaped to fit almost any toilet seat. Complete with reducer ring, the snap-on design is very lightweight, and simple to transport. Available for both open front and round toilet seats. Easily cleaned using warm soapy water.

**Shape:**

**Standard Round:** 13" W x 14 1/2" L/Opening 7 1/2" x 9" L.

**Open Front Oval:** 14 1/2" W x 18" L/Opening 6 1/2" x 10 1/2" L.

**Color:** White.





## 6855 SOFT DEFLECTOR

This unit is made to fit onto our Model 6850 Toilet Seat Cover with Reducer Ring, or a standard toilet seat, for both open front and round styles. The vinyl-coated foam is easier to clean than hard plastic using warm soapy water. It can be attached to any toilet seat, either by snapping it onto the front of the seat or clamping it to the rim. This unit is great for traveling because it's small, lightweight, and very discreet. This item comes standard with a foam seat cover mount, or you can purchase the optional clamp to the rim.

**Sizes:** Small, Medium, or Large.

**Option:** Clamp-on-Rim-Mount.

## 6856 PERSONAL DEFLECTOR

If a standard deflector is too bulky and makes toileting difficult, you can try this instead. We've added a flexible preformed waistband which holds our soft deflector in place. The placement of the deflector is adjustable up and down as well as side-to-side. This simple on/off is much easier and more discreet than a mounted option. Easy to clean using warm soapy water.

**Small:** 5 1/2" H x 11/8" D x 11/4" W.

**Medium:** 6 1/2" H x 2" D x 1 3/4" W.

**Large:** 7 1/2" H x 2 1/2" D x 2 1/2" W.

**Color:** White.



## 6858 PRIVACY APRON

A Privacy Apron can make toileting a much more relaxed experience. Our soft vinyl extends up and around the waist, with a Quick-Release Buckle fastener at the back. The easy to clean material remains germ resistant wash after wash. This unit is made to fit onto our Model 6850 Toilet Seat Cover with Reducer Ring, or a standard toilet seat, for both open front and round styles. This item comes standard with a foam seat cover mount or you can purchase the optional clamp to the rim.

**Sizes:** Small, Medium, or Large.

**Option:** Clamp-on-Rim-Mount.



### 6860 CHANGING PAD (DIAPER STATION)

Our full coverage changing pad enables an individual to relax without fear of rolling off of the edge of the padding or having their arms and/or legs touch cold metal. Centering the user becomes easier with a larger coverage area for individuals with conditions such as hip dysplasia. Our vinyl covered foam is non-absorbent and will therefore remain germ and bacteria free as long as all surfaces are cleaned with warm soapy water after each use.

**Color:** Royal Blue.

**Measurements:** 26  $\frac{3}{4}$ " L x 25  $\frac{1}{2}$ " W x 1" H.

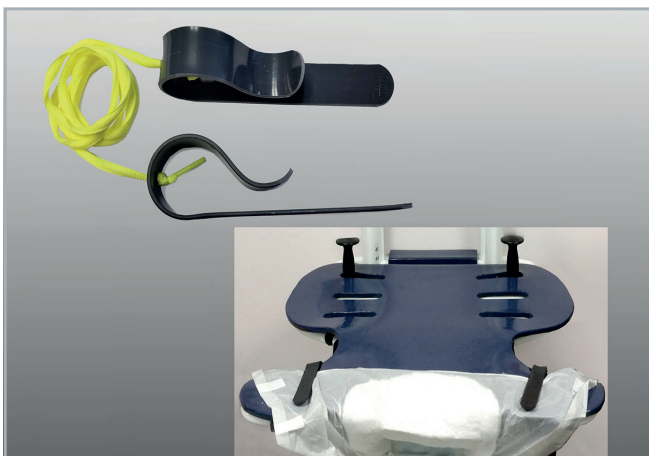


### 6861 FOREHEAD/CHIN REST

This formed pad of soft foam will help the individual to relax during the changing process. Their head and/or chin safely and comfortably rests on the pad without any discomfort as the cold metal surfaces are covered. It is easy to install and remove, having been designed to slip right over the top 2 metal pieces. Our vinyl-covered foam is non-absorbent and will therefore remain germ and bacteria free as long as all surfaces are cleaned with warm soapy water after each use.

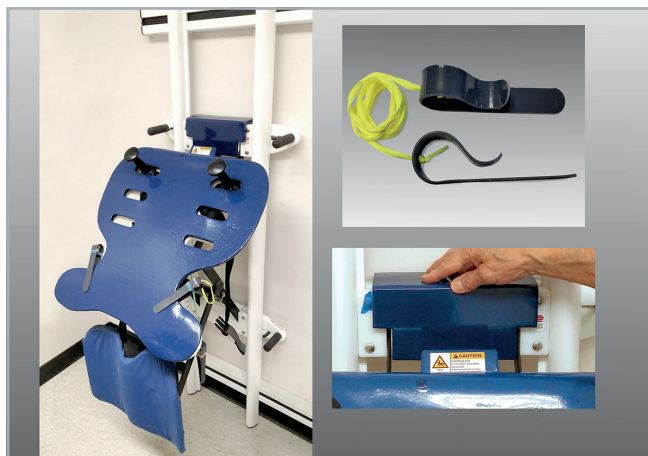
**Color:** Royal Blue.

**Measurements:** 9  $\frac{1}{2}$ " L x 3" W x 4  $\frac{1}{2}$ " H.



### 6859 J-CLIPS

Simplify and shorten changing time using these holding clips, as the diaper is clipped in place and ready to go. The system comes with a retention lace to keep the clips together.



### 6862 CHANGING STATION KIT (DIAPER STATION)

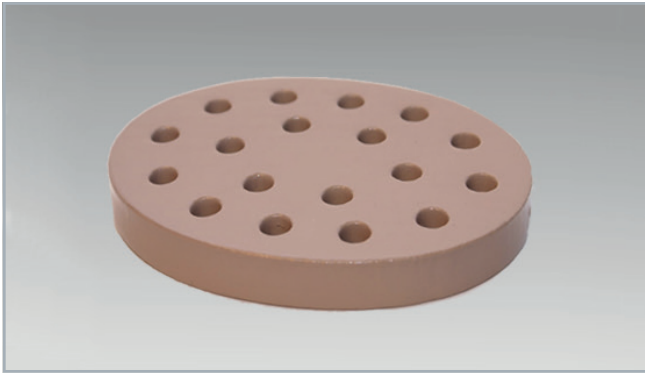
**Contents:**

6860 Changing Pad.

6861 Forehead/Chin Rest.

6859 J-Clips.

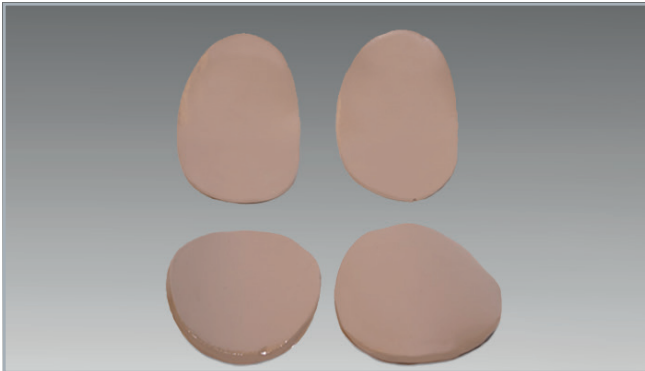
## HELMET ACCESSORY & REPLACEMENT ITEMS



### 7633 CROWN PAD

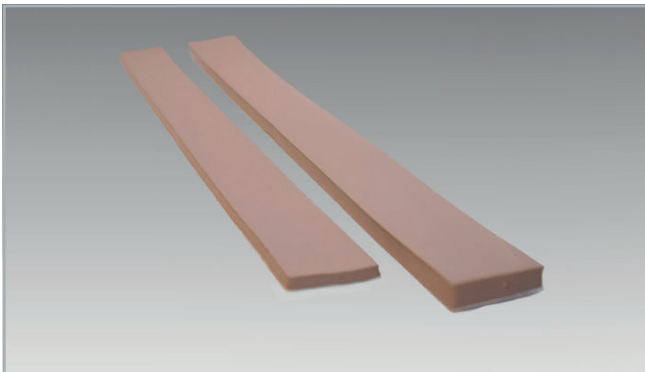
Just insert this vinyl-coated, shock-absorbent, and ventilated foam pad into the crown area of the helmet to adjust fit. We do recommend putting a piece of paper between the crown pad and the helmet until proper positioning has been determined. The heat that is created by the wearer will adhere the surface of the helmet to the pad in a very short period of time. It is easily washed in warm soapy water.

Sizes: 1/4" or 1/2" thickness.



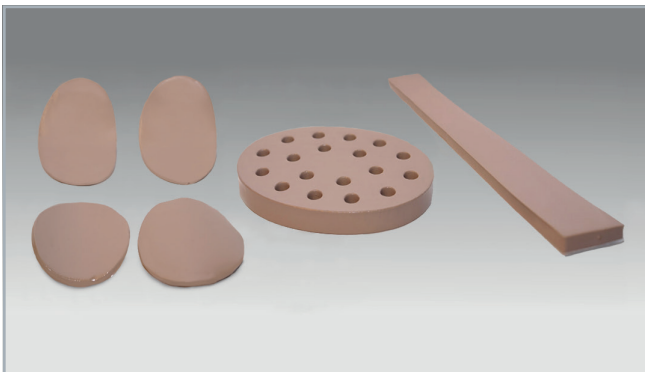
### 7634 LINER PADS

Set of 4 closed-cell, foam pads, each measuring 3" x 3 1/2" x 1/4". They are vinyl-coated with a self-adhesive backing which bonds itself to the inside of the foam helmet. They can be used for size adjustments, and are easily washed with warm soapy water. We suggest that you practice using scotch tape before adhering to ensure proper fit, as they are not meant to be repositioned.



### 7635 LINER CUSHION

These shock-absorbent, vinyl-coated foam strips of our closed-cell foam measure approximately 20" in length and 2" wide. We offer them in 2 thicknesses: 1/4" and 1/2". They are generally used to reduce circumference when an individual measures between 2 sizes. The 1/4" will reduce circumference up to 1", and the 1/2" will reduce circumference up to 2". Just position and secure inside of the helmet, cutting desired length if needed, by peeling off the paper backing and applying. We suggest that you practice using scotch tape before adhering to ensure proper fit, as they are not meant to be repositioned. \*Can be used to size Hensinger collars as well.



### 7643 HELMET PAD-KIT

We include all 3 pads in our kit:

1 - 7633 Crown Pad in either a 1/4" or 1/2" thickness.

1 set of 4 - 7634 Liner Pads.

1 - 1/4" or 1/2" Liner Cushion.

We suggest that you practice using scotch tape before adhering to ensure proper fit, as they are not meant to be repositioned.



### 7637 CUSH-IN PADS

Highly recommended for use with all of our helmets. Medical grade lightweight oval foam pads are a perspiration absorbent material that means a cooler, more comfortable fit. Simply peel off the adhesive backing and place pads where needed. They are washable and quick drying, and are especially beneficial when a helmet is worn continuously. When trying on a helmet for fit, do not remove the tape backing until proper positioning has been determined, as the pads are not meant to be repositioned. Set of 4 small and 4 large.





## 9823 CHIN GUARD

Fitting comfortably over the chin area, this 1/2" thick foam guard can be worn with all of our helmets except for the Item# 9822 Hard Shell Helmet with Face Guard. It is soft yet shock-absorbent and easily cleaned with soap and water. The strap is laminated into the chin guard and attaches easily to the ear slings. Custom colors are available for an additional charge; see our color chart (Page 43) for the complete list. Weight averages only 1 1/2 ounces.

**Small:** Cup size is 3/4" deep, 3" long, 2 1/4" wide.

**Large:** Cup size is 1 1/8" deep, 5" long, 3 1/4" wide.

**Standard Colors:** Royal Blue, Casa Tan, Pink, and Black.



## 7670 HEADGEAR EVALUATION KIT

Sizing is easy with this evaluation kit! We include a complete set of our Item# 9820 Soft Shell Helmet (Page 4) in each stock size that we manufacture, an Item# 7633 Crown Pad (Page 34), as well as both of our 1/4" and 1/2" Item# 7635 Liner Cushions (Page 34), to help with fitting adjustments. This kit also comes with our Item# 9850 Headgear Measurement Tape (Page 36), and a lightweight, easy-to-carry, bag for travel to schools and homes.



## 7630 FACE GUARD

This clear polycarbonate shield has openings for unobstructed vision and ventilation. The chin area is cushioned with 1/4" vinyl-coated foam padding. The hardware and instructions for mounting to an Item# 9821 Hard Shell Helmet (Page 5) are included.

**Specify helmet Size and Color when ordering.**

**Options:** Modifications to the Face Guard are available for an additional charge and will make the item **NONRETURNABLE**; see page 40 for a complete list.

**Note:** The Face Guard **CAN ONLY** be mounted onto a Hard Shell Helmet; it **CANNOT** be mounted onto a Soft Shell Helmet.

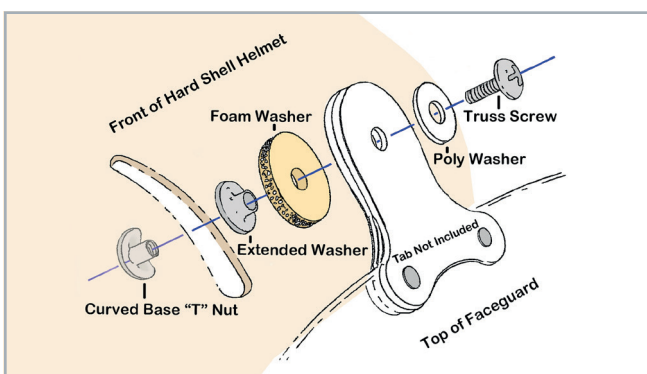


## 7636 FACE BAR

Our clear polycarbonate bar is formed and attached to strong polyethylene side supports, which are mounted onto the helmet shell. The hardware and instructions for mounting is included.

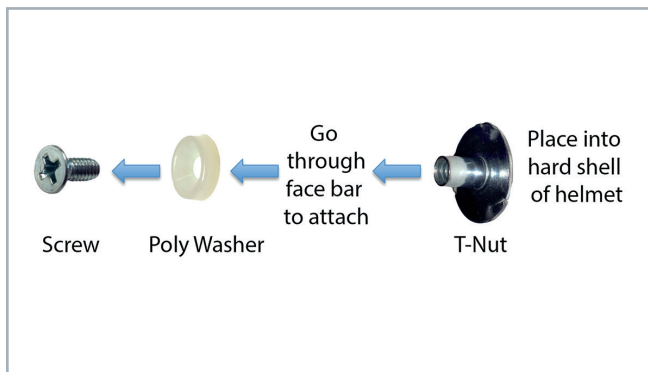
**Specify helmet size and color when ordering.**

**Note:** The Face Bar **CAN ONLY** be mounted onto a Hard Shell Helmet; it **CANNOT** be mounted onto a Soft Shell Helmet.



## 7642 FACE GUARD REPLACEMENT HARDWARE

Replacement set of T-nut, extended washer, foam washer, poly washer, and truss screw. Instructions are included for mounting onto the helmet.



### 7632 FACE BAR REPLACEMENT HARDWARE

Replacement set of 4 each: counter-sunk screw, poly washer, and T-nut. Instructions are included for mounting onto the helmet.



### 7645 CHINSTRAP WITH RUBBER CHIN CUP

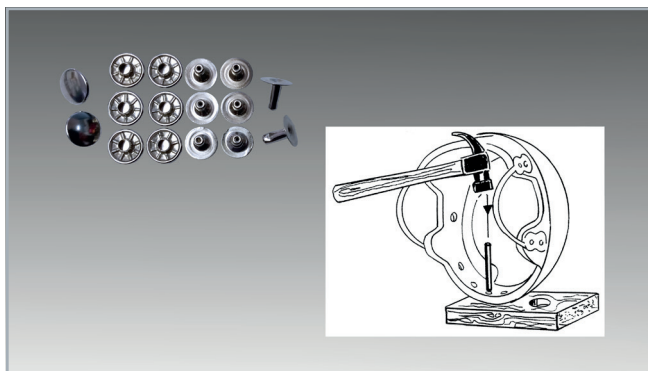
For our Item# 9825 Deluxe Hard Shell Helmet (Page 7), but can be used with any of our helmets. Black polypropylene webbing comes with a soft rubber chin cup for a sporty look. The chin cup is for decorative purposes only. Refer to Item# 9823 Chin Guard (Page 35) when needing more protection.

**Specify:** Helmet size and color when ordering.



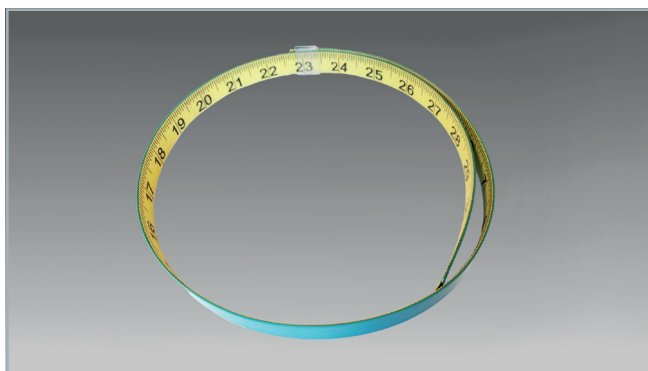
### 7646 RUBBER CHIN CUP

Soft rubber chin cup for a sporty look. Chin cup is for decorative purposes only. Refer to Item# 9823 Chin Guard (Page 35) when needing more protection.



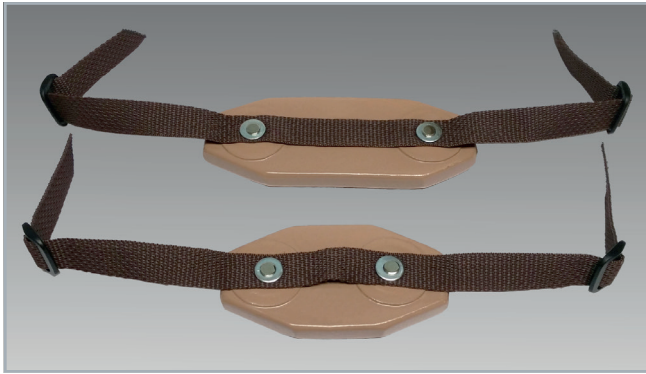
### 7666 SPEEDY RIVETS

These rivets are used for replacing the liner of a Item#'s 9821, 9822, 9824, and 9825 Hard Shell Helmet (Page 5 & 7). We offer this option to make this procedure available to our dealers who do not have automatic riveting machines. The set consists of rivets and instructions.



### 9850 HEADGEAR MEASUREMENT TAPE

A reliable way to take accurate measurements, this flexible tape can be used for measurements of a client's head or to verify measurements of an existing helmet.



### 7638 PADDED BACK OF THE NECK STRAP

This vinyl-coated, 1/2" thick pad is permanently attached to our brown polypropylene webbing and gently cradles the back of the head to minimize helmet movement. It attaches easily to the ear slings with slide buckles by pulling securely across the nape of the neck and can also be used to balance the extra weight of a face guard.

**Small:** 4 1/2" L x 2 1/4" W, fits sizes XX-Small - Small.

**Large:** 6" L x 2 1/4" W, fits sizes Medium - XX-Large.

**Specify:** Helmet style, size, and color.



### 7639 BACK OF THE NECK STRAP

Brown polypropylene webbing is used to prevent the helmet from sliding and rocking. It attaches easily to the ear slings with slide buckles by pulling securely across the nape of the neck, and can also be used to balance the extra weight of a face guard.

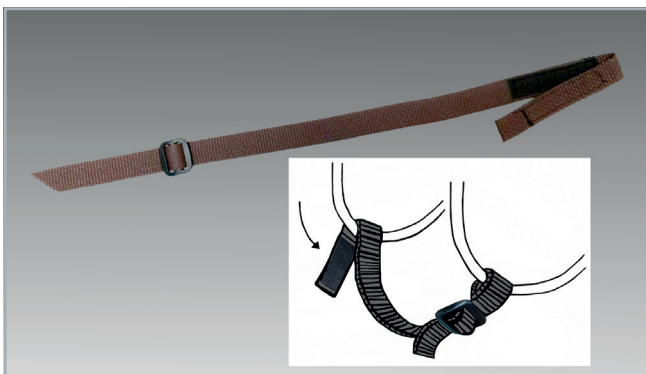
**Specify:** Helmet style, size, and color.



### 7631 CHINSTRAP

Brown or black polypropylene webbing with a snap closure on one end for easy fastening, and a slide buckle on the other for easy sizing. This is the standard chinstrap that comes on all of our helmets.

**Specify:** Helmet style, size, and color as well as any modifications.



### 7640 VELCRO CHINSTRAP

A quick alternative to our snap closure when easy on/off is desired. Black, or brown polypropylene webbing has Velcro on one end and a slide buckle on the other for easy sizing.

**Specify:** Helmet size, style, and color as well as any modifications.



### 7641 CHINSTRAP WITH QUICK-RELEASE BUCKLE

Our strong, 3/4" polypropylene webbing with a Quick-Release Buckle fastener and side-release buckle. Instructions and hardware are included.

**Choose from 2 options:**

- 1). Under the Chin closure.
- 2). Top of the Helmet closure.

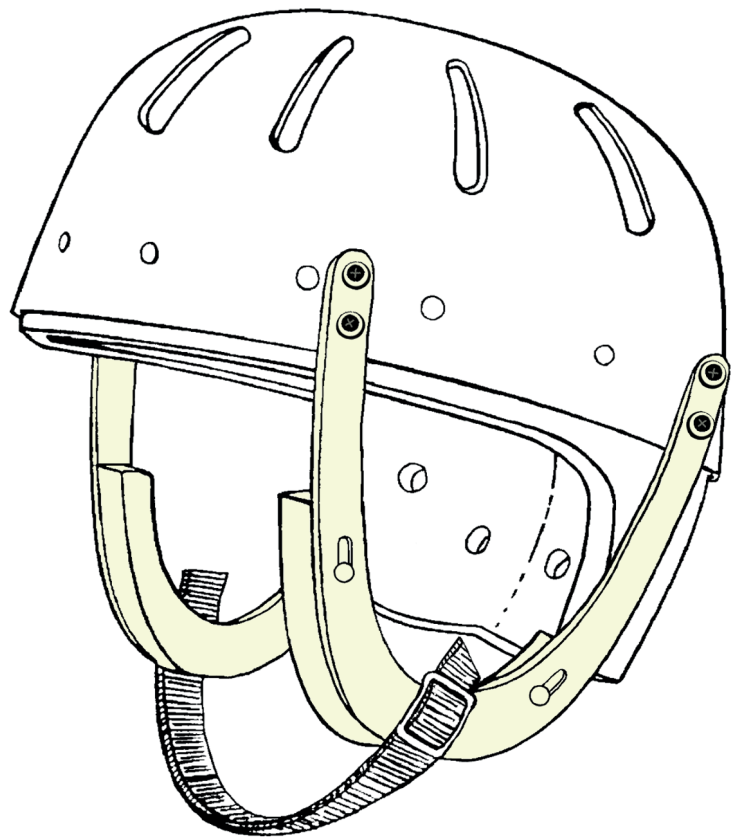
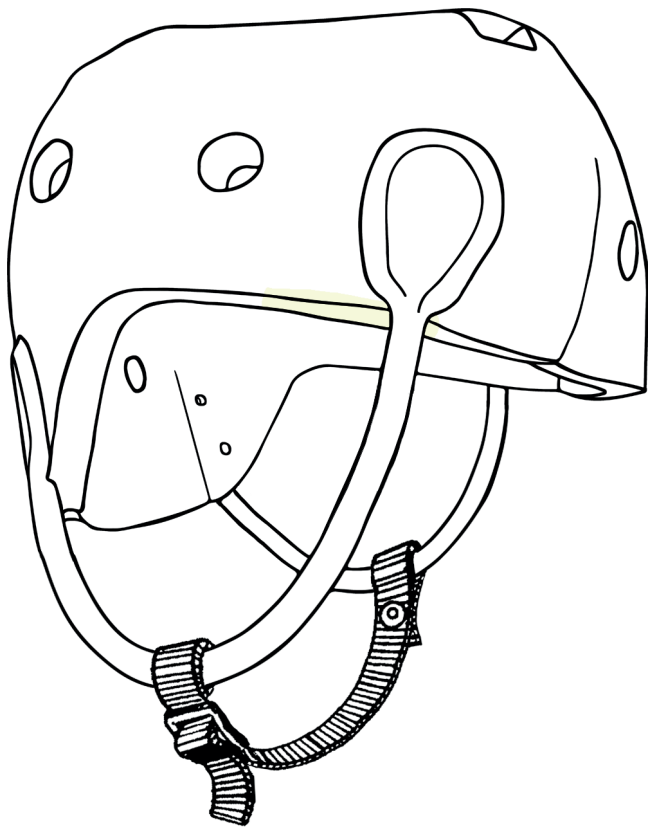
**Specify:** Helmet size, style, color, and option when ordering.



# HELMET MODIFICATIONS

We have been designing and building headgear to accommodate the specific needs of our customers for over 55 years. There are many modifications that can be added to our standard line of helmets to individualize the fit and function. In some cases, it may be necessary to custom fabricate headgear to individual specifications to ensure proper fit; please refer to our Custom Headgear Measurement Section (Page 12) for specifics.

**Please note:** Due to their individualization, custom and modified headgear are **NOT** returnable and will require additional fabrication time.



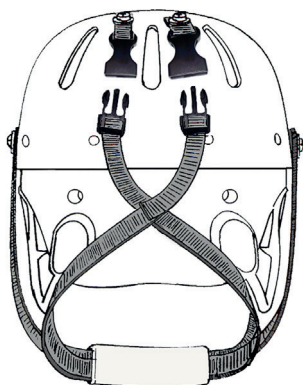
## 3470 EYEGLASS RELIEF AREA

Eyeglasses can prevent a helmet from being properly positioned on a user's head. This modification of our Soft Shell Helmets incorporates a cut out which keeps the foam above the eyeglass level at the temples, ensuring that the helmet will not be pushed up on eyeglass frames. On our Hard Shell Helmets we substitute padded polypropylene slings, specially designed to allow extra room for eyeglass frames.

This option can also be used to prevent breakage of the rubber ear slings on our Hard Shell Helmets for individuals who tug at their ear slings and/or chinstraps.

**Note:** This item **CANNOT** be retrofitted onto Item# 9817 Halo Helmet, Item# 9820 Soft Shell Helmet, or Item# 9829 Full Coverage Helmet.

**Custom colors and/or modifications to any product require up to 7-10 business days for fabrication. Custom and/or modified items are not returnable.**

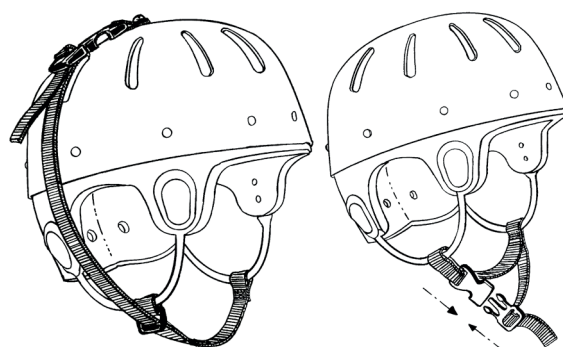


### 3472 CUSTOM STRAPPING SYSTEM

Ideal for those situations where there are attempts to remove the helmet at inappropriate times. The straps are attached to each side of the helmet, or to the bottom of the face guard on Item# 9822 Hard Shell Helmet with Face Guard (Page 7). They cross comfortably underneath the chin, and must cross once again in the back before finally attaching to the rear top of the helmet with Quick-Release Buckles.

**Note:** This option **CANNOT** be retrofitted onto any Soft Shell Helmet (Item#'s 9817, 9820, or 9829).

\*D-Rings or Metal Clips are available for added durability, call a Danmar representative to discuss.

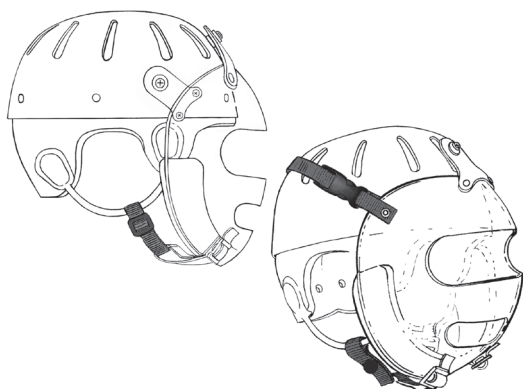


### 3469 QUICK-RELEASE BUCKLE CHINSTRAP

Designed for use in place of a standard chinstrap when frequent attempts to remove the helmet may occur. To release, simply squeeze the buckle. It is permanently attached to the helmet to prevent it from being removed or misplaced; you may choose either an Under the Chin closure or Top of the Helmet closure. Please note: The Top of the Helmet Closure may only be ordered with a **\*NEW\*** 9820 Soft Shell Helmet or 9829 Full Coverage Helmet. It **CANNOT** be retrofitted onto an existing 9820 Soft Shell or 9829 Full Coverage Helmet.

**Specify:** Under the Chin or Top of the Helmet Closure.

\*To replace an existing 3469 strap, see item# 7641 on page 37.



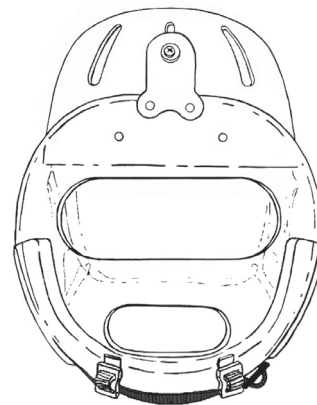
### 3463 STABILIZING SIDE TABS

The Face Guard is securely held in position by these attachments on each side of the helmet.

**Choose either:**

**Permanent Mount:** The face guard remains positioned over the face and cannot be pivoted to the top.

**Pivot Mount:** Our Quick-Release Buckles are fastened to the face guard on both sides of the helmet. Simply unbuckle on each side, pivot the face guard up and over the top of the shell, and re-buckle to hold it in place.



### 3462 EXTRA LONG FACE GUARD

A full 1" longer than our Item# 7630 Standard Face Guard (Page 35), this modification also has larger eye and mouth openings. There is an eye level opening of 7" x 2" for unobstructed vision, and a mouth opening of 4 1/2" x 1 1/2" for maximum ventilation.

**Options:** May be ordered with modification #3461 (Page 40).

**Specify:** Helmet size, style, and color.

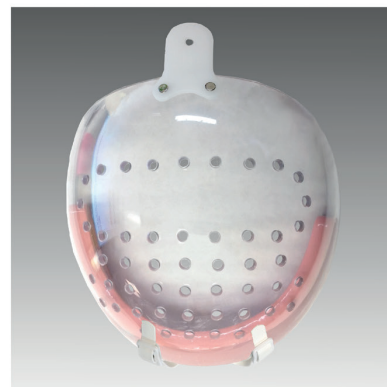
Custom colors and/or modifications to any product require up to 7-10 business days for fabrication. Custom and/or modified items are not returnable.



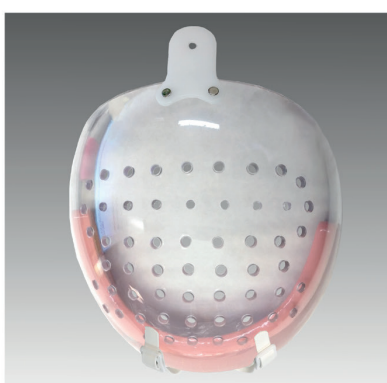
1. Ventilation holes around solid eye area, with standard mouth opening.



2. Ventilation holes around solid eye area, with solid mouth area.



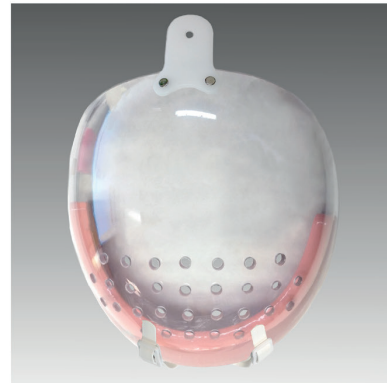
3. Ventilation holes around solid eye area, ventilation holes in mouth area.



4. Ventilation holes in eye and mouth area.



5. Standard eye opening with ventilation holes in mouth area.



6. Solid eye area with ventilation holes in mouth area.



7. Solid eye area with standard mouth opening.



8. Standard eye opening with solid mouth area.



9. Solid Face Guard without any openings.

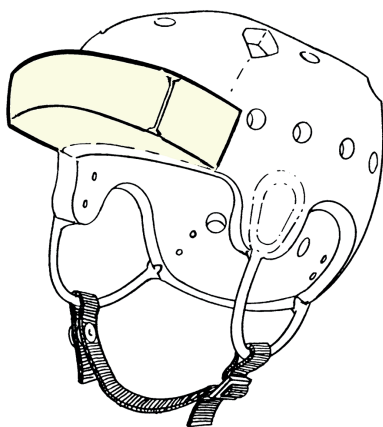
## 3461 FACE GUARD MODIFICATIONS

Our basic Face Guard (Item# 7630-Page 35) may be modified to accommodate the individual needs of the end user. As an example, ventilation holes could be used in place of the standard openings when the objective is to keep items out of the mouth or eye area. If ventilation holes are used throughout the eye area, it should be noted that vision could be obstructed.

**Note:** This modification must be ordered along with a **NEW** item #7630 Face Guard, Item #3462 Extra Long Face Guard (Page 39), or 9822 Hard Shell Helmet with Face Guard (Page 7); an existing face guard **CANNOT** have this modification.

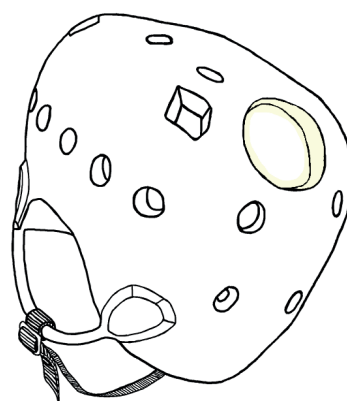
**Custom colors and/or modifications to any product require up to 7-10 business days for fabrication. Custom and/or modified items are not returnable.**





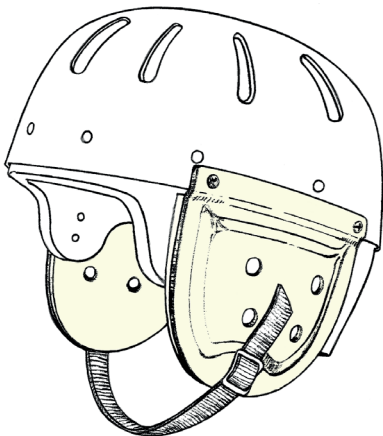
### 3468 FOAM VISOR

A thick 2" foam visor extends from the helmet approximately 3" and absorbs impact from bumps to the frontal area of head. Our closed-cell foam with vinyl-coating retains its compression resistance. This can be used in conjunction with the Hard Shell Helmet with a Face Bar Item# 9824 (Page 7) when face-forward impact is probable.



### 3471 PONYTAIL CUTOUT

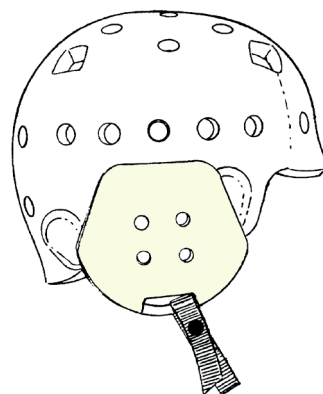
A hole is cut into the rear top of the helmet to allow room for a ponytail. Available ONLY on Item# 9820 Soft Shell Helmet (Page 4) and Item# 9829 Full Coverage Helmet (Page 6).



### 3459 HARD SHELL EAR COVERINGS

These tough, polyethylene ear coverings are lined with ventilated soft foam offering protection and comfort. They attach to the outside of a Hard Shell Helmet and cover the ear area. Purchase them with a new helmet, or order to add to an existing Hard Shell Helmet (Item#'s 9821, 9822, 9824, and 9825). Instructions for installation are included.

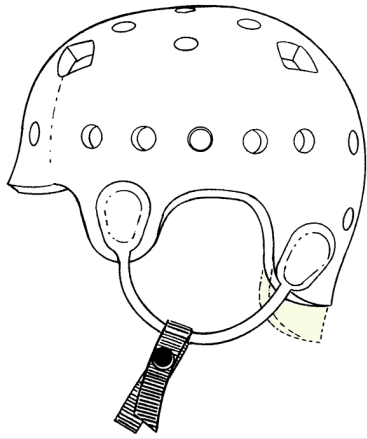
**Specify:** Helmet size, color, and any modifications.



### 3460 SOFT FOAM EAR COVERINGS

Fabricated from our soft foam, these ventilated ear coverings extend down over the ears of our soft foam helmets (Item#'s 9820, 9829, and 9817) or the soft foam liners of our Hard Shell Helmets (Item#'s 9821, 9822, 9824, and 9825). This modification must be specified at the time of order as it cannot be retrofitted onto an existing helmet.

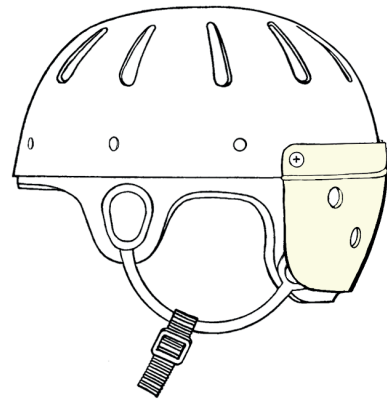
Custom colors and/or modifications to any product require up to 7-10 business days for fabrication. Custom and/or modified items are not returnable.



### 3464 REAR FOAM EXTENSION

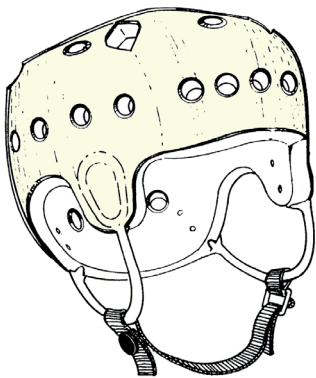
In order to provide additional protection for the rear of the head, the vinyl-coated, shock-absorbing foam can be extended lower. This modification **CANNOT** be retrofitted to an existing helmet.

**Specify:** Length of extension when ordering.



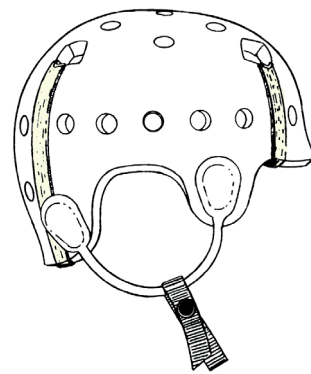
### 3465 REAR HARD SHELL EXTENSION

In order to provide additional coverage for the rear of the head, the polyethylene shell may be extended to cover the exposed foam at the back of the helmet. The standard length of the attachment is 3".



### 3466 FOAM REINFORCEMENT

Reinforced vinyl material is bonded to the outer foam prior to being coated with vinyl to provide extra strength to a helmet which may receive excess wear and tear.



### 3467 REINFORCED SEAMS

We bond a strong reinforcement material into our foam liner seams to provide extra strength to these areas which may receive excess wear and tear.

Custom colors and/or modifications to any product require up to 7-10 business days for fabrication. Custom and/or modified items are not returnable.



WHITE



GRAY



CASA TAN



ALMOND



YELLOW



ORANGE



RED



HOT PINK



PINK



LAVENDER



PURPLE



MAROON



ROYAL BLUE



BRIGHT BLUE



BABY BLUE



TEAL



FOREST GREEN



ELECTRIC GREEN



BLACK

## 3450 CUSTOM COLOR

Color can personalize any piece of adaptive equipment which can add an extra dimension of acceptance for the individual wearing it. Any of our Soft Shell Helmets (Item#s 9817, 9820, or 9829) or the inner soft foam liners of our Hard Shell Helmets (Item#s 9821, 9822, 9824, or 9825) can be ordered in a custom color. The hard outer shells of the Items#s 9821, 9822, and 9824 come standard in a Creamy White color, but are also available in Black for no extra charge.

Many of our other products can be ordered in a custom color as well.

**Custom Colors:** White, Gray, Casa Tan, Almond, Yellow, Orange, Red, Hot Pink, Pink, Lavender, Purple, Maroon, Royal Blue, Bright Blue, Baby Blue, Teal, Forest Green, Electric Green and Black.

**Custom colors and/or modifications to any product require up to 7-10 business days for fabrication. Custom and/or modified items are not returnable.**



### Butterflies Fluttering



### Fun Time Auto's & More



### Dinosaurs



### USA



### Sports



### Floral Fun



### Zoo



### Hearts



### Our Little Princess



## 3451 CUSTOM PATTERNS

Our Patterns can personalize any piece of adaptive equipment, which can add an extra dimension of acceptance for the individual wearing it. Our Patterns adhere to the Fabriccoat of our helmets, then an application of clear coat covers them to keep them in place. The Patterns are **NOT** a stock item and are considered to be a

non-returnable item. Please allow up to 7 to 10 business days for the application of a pattern.

#### Specify Pattern:

Butterflies Fluttering, Sports, Fun Time Autos' & more, Floral Fun, Dinosaurs, Zoo, USA, Hearts, or Our Little Princess.

**Custom colors and/or modifications to any product require up to 7-10 business days for fabrication. Custom and/or modified items are not returnable.**

## SUPPORTIVE POSITIONING, MODIFICATIONS, & ACCESSORIES



### 6821 SIZE REDUCERS

In-between sizes can now be easily addressed. This Casa Tan, vinyl-coated, foam insert fits around the inner circumference and has Velcro attachment straps. The narrow reducer can be used over or underneath the covers and is designed to size down the circumference of a Hensinger. The wide reducer is designed to size up or down the height of a Hensinger. Can be used with Item# 6810 and Item# 6809 Hensinger

**Sizes:** Narrow - 7" L x 2 1/2" W.  
Wide - 8" L x 7" W.



### 7901 HENSINGER REPLACEMENT COVERS

These replacement covers for Item#'s 6810 & 6809 Hensinger Head Supports are soft and easy to clean.

**Colors:** Blue or Black cotton.

**Specify:** Hensinger size when ordering.



### 7902 HENSINGER REPLACEMENT STRAPS

Replacement Strap for Item#'s 6810 & 6809 Hensinger Head Supports.

**Color:** Black.

**Specify:** Hensinger size when ordering.



### 7903 QUICK-RELEASE MOUNT PLATE

Use this addition to mount Item#'s 6810 & 6809 Hensinger or Item# 6828 Side-Opening Head Support to a seating system. It has Velcro straps to attach the plate to the Hensinger, so there's a breakaway option for emergencies or if the user needs varying levels of support.



### 6818-A TWO-STEP HEAD SUPPORT WITH HENSINGER & OTTO BOCK MOUNT

Using a special adapter plate, the Hensinger Head Support is mounted to standard Otto Bock hardware. Additionally, a "second-step" Head Rest is added above the Hensinger for extra occipital support. This combination allows for a variety of angles in order to achieve the best possible position for the user's head, as it can be adjusted vertically, horizontally, and laterally. With this combination system, better mid-line positioning can be achieved, especially in asymmetrically contoured seating systems. A vertical bar is mounted to the horizontal bar with Danmar mount brackets & screws as illustrated. A sturdy leather cover wraps around the Hensinger adapter plate so that the unit has a "breakaway" feature. Hardware is also supplied for conversion to a non-breakaway head support if desired.

**Standard cover colors:** Blue or Black cotton.

**Sizes:** Small, Medium, and Large.

**Options:** Mounted or Unmounted (Mounted version comes with a mount plate and straps to attach to a permanent seating system or wheelchair).

**Specify:** Length of Vertical Mount Bar - 3", 4", 5", and 6".



### 6818-B TWO-STEP HEAD SUPPORT WITH HENSINGER & OTTO BOCK MOUNT

Using a special adapter plate, the Hensinger Head Support is mounted to standard Otto Bock hardware. The Hensinger can be adjusted vertically, horizontally, and laterally. Better mid-line positioning can be achieved with this combination head support system, especially in asymmetrically contoured seating systems. A sturdy leather cover wraps around the Hensinger adapter plate so that this unit has a "breakaway" feature. Hardware is also supplied for conversion to a non-breakaway head support if desired. Comes as pictured with the Hensinger and Otto Bock Mount; there is no vertical mount bar or occipital head rest option.

**Standard cover colors:** Blue or Black cotton.

**Sizes:** Small, Medium, and Large.

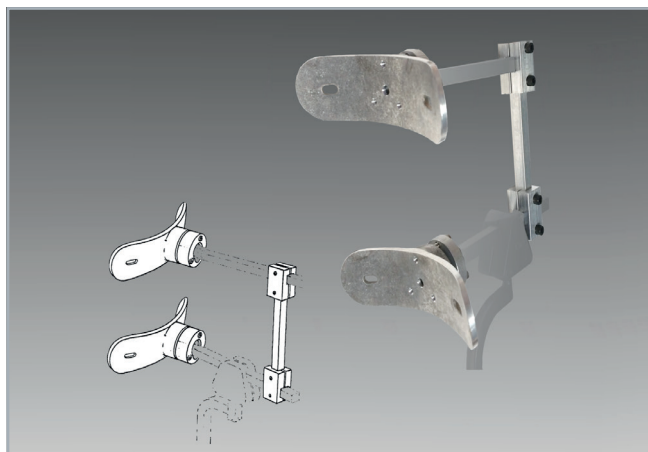
**Options:** Mounted or Unmounted (Mounted version comes with a mount plate and straps to attach to a permanent seating system or wheelchair).



### 6818-C TWO-STEP HEAD SUPPORT WITH OTTO BOCK MOUNT

Using a special adapter plate, the Hensinger Head Support is mounted to standard Otto Bock hardware. The Hensinger has substantial adjustments in the vertical, horizontal, and if desired, lateral planes. A sturdy leather cover wraps around the Hensinger adapter plate so that this unit has the "breakaway" feature. Hardware is also supplied for conversion to a non-breakaway head support if desired. Includes both the Danmar Adapter Plates & Vertical Mount Bar, plus Otto Bock connections as pictured.

**Specify:** Length of Vertical Mount Bar - 3", 4", 5", and 6".



### 6818-D TWO-STEP HEAD SUPPORT-HARDWARE ONLY

Using a special adapter plate, the Hensinger Head Support is mounted to the standard Otto Bock hardware. The Hensinger can be adjusted horizontally, vertically, and laterally. A sturdy leather cover wraps around the Hensinger adapter plate so that this unit has the "breakaway" feature. Hardware is also supplied for conversion to a non-breakaway head support if desired.

**Danmar Hardware Only:**

Includes Adapter Plates, Mount Brackets, and Vertical Mount Bar as pictured.

**Specify:** Length of Vertical Mount Bar - 3", 4", 5", and 6".





### 6815 HENSINGER WITH MOUNT BAR

Social interactions and learning skills may be achieved more easily if the head is comfortably positioned while using Feeder Seats. The preformed aluminium bar has Item#’s 6810 or 6809 Hensinger Head Support attached. Specify the size of Feeder Seat\* and Hensinger Head Support when ordering

**Standard cover colors:** Blue or Black cotton.

**Sizes:** Small, Medium, and Large.

Lycra covers are available for an upcharge see page 47.



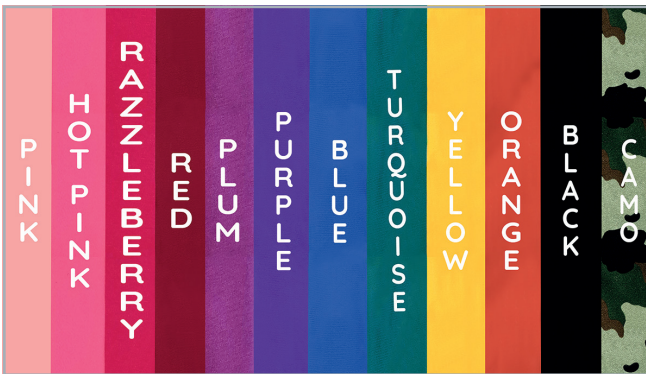
### 7935 HEAD SUPPORT EVALUATION/SIZING KIT

Designed for professionals to use in their businesses or on the road when doing in-services at client facilities, this evaluation kit has one of each size of models Item# 6810 Hensinger Head Support and Item# 6828 Side-Opening Head Support. In addition, the Narrow and Wide Size Reducers are included to help when the end user is between sizes. Using this kit can eliminate the guess work when ordering these products.



### 6833-E SWIRL EVALUATION/SIZING KIT

Designed for professionals to use in their businesses or on the road when doing in-services at client facilities, this evaluation kit has one of every size of Model # 6833 Swirl Support. Using this kit can eliminate the guesswork when ordering these products. Covers come in Pink, Blue, and Black; foam comes in Black and White.



### 7923 LYCRA HEAD SUPPORT COVERS

These Lycra covers are simple to put on and take off, and are machine washable. They come as 2 sets per pack, and are available for Item#’s 6810 and 6809 Hensinger Head Supports, Item# 6826 Anterior Head Support as well as Item# 6828 Side-Opening Head Support.

**Specify:** Model, Size, Mounted or Unmounted, and Color.

**Note:** Covers will require up to 5-7 business days for fabrication.



### 6833-C REPLACEMENT LYCRA SWIRL SUPPORT COVERS

Easy to put on and take off. To clean wash on normal cycle and then put them in the dryer. Packaged with 2 per pack.

**Specify:** Size and Color.

**Note:** Covers will require up to 5-7 business days for fabrication.



### 6625 TRUNK SUPPORT BAR

Designed for use when an individual is seated in a wheelchair or custom seating system. Firm pelvic support is achieved by using an inner core of molded nylon, with a vinyl-coated, foam cover for comfort and ease of cleaning with warm soapy water. The polypropylene strap has a Quick-Release Buckle on one side for easy access.

**Product Dimensions:** 12" L x 4 1/2" to 3" W to the end where the straps start.

**Color:** Black.



### 6626 TRUNK SUPPORT SYSTEM

Designed for use when an individual is seated in a wheelchair or custom seating system. Firm support is achieved by using an inner core of molded nylon, with a vinyl-coated foam cover for comfort and ease of cleaning with warm soapy water. Adding shoulder straps with vinyl-coated foam covers to the 6625 Trunk Support Bar supports the torso. The polypropylene straps have Quick-Release Buckles for easy access. The Trunk Support System may be permanently mounted to the back of a chair.

**PLEASE NOTE: THIS PRODUCT IS NOT A RESTRAINT.**

**Product Dimensions:** 12" L x 1 1/2" W.

**Color:** Black.

**Options:** A crotch strap can be added to this trunk support (for a small upcharge).



### 6674 LAP STRAP COVER

Seated individuals who use straps for positioning can now enjoy a cushy cover to stop those belts from digging into sensitive skin. The slit top provides room for a buckle. Designed for use with 1 1/2" or 2" lap straps. They are easy to clean with warm soapy water, and are very durable. Sold individually.

**Color:** Black or Casa Tan.

**Sizes:** Small - 14" L x 3 1/2" W or Large - 18" L x 3 1/2" W.



### 6676 CONTOUR COVERS

Seated individuals who use straps for positioning can now enjoy a cushy cover to stop those straps from digging into sensitive skin. These soft, vinyl-coated foam tubes easily slip over shoulder or lap belts. A moldable core allows the covers to be shaped, helping to position an individual comfortably. They are easy to clean with warm soapy water, and are very durable. Sold by the pair.

**Color:** Black.

**Dimensions:** 12" L x 2" W.



### 6678 HARNESS COVERS

Seated individuals who use straps for positioning can now enjoy a cushy cover to stop those straps from digging into sensitive skin. Soft, vinyl-coated foam tubes easily slip over shoulder straps. Designed for use with 1" or 2" straps. They are easy to clean with warm soapy water, and are very durable. Sold by the pair.

**Color:** Black.

**Sizes:** Small - 12" L (up to a 1") strap or Large - 12" L (up to a 2") strap.



### 6922 FOAM GRIP COVERS

When hard crutch, cane, or walker handles hurt your hands or palms, use these spongy covers. The ventilated foam creates a sturdy grip designed for comfort. Use them on exercise equipment and bicycles too! They are easy to clean with warm soapy water. Packaged and priced per pair.

**Product Dimensions:** 6" L, fits up to a 1" diameter handle.

**Color:** Black.

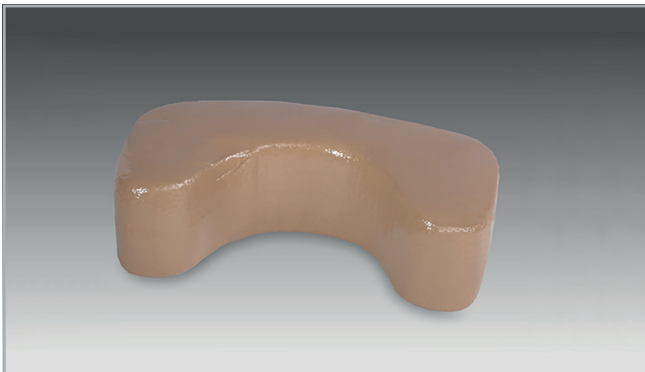


### 6672 COMFY CUFFS

These positioning aids are made of our softest foam, reinforced and covered with a durable vinyl finish. The strap is adjustable and can be placed around either armrests or footrests. A one-snap buckle allows easy on/off. They are easy to clean with warm soapy water. Sold by the pair.

**Sizes:** Small - 9" x 1 1/2" or Large - 11" x 1 1/2".

**Color:** Black or Casa Tan.

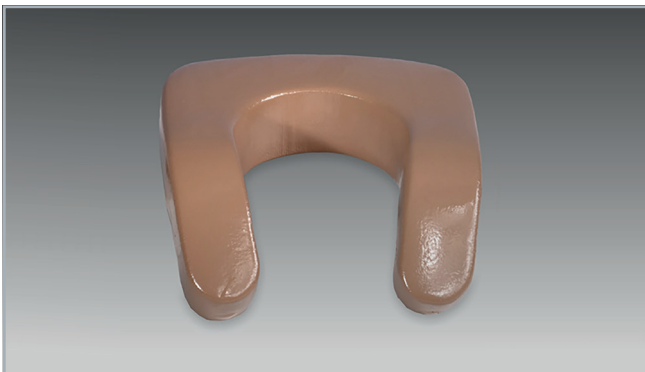


### 6630 C-COLLAR

The C-Collar is contoured to support the lateral and posterior neck areas. These collars help prevent neck hyperextension. Place them behind the head during classroom activities and while eating. The soft foam is reassuring and comfortable, and can be used with most seating units. It is easy to clean with warm soapy water.

**Product Dimensions:** 8" L x 4" W x 2" H.

**Color:** Black or Casa Tan.



### 6635 EXTENDED C-COLLAR

The C-Collar is contoured to support the lateral and posterior neck areas. The Extended C-Collar rests on the shoulders and comes down slightly for increased stability. These collars help prevent neck hyperextension. Place them behind the head during classroom activities and while eating. The soft foam feels reassuring and comfortable. It can be used with most seating units, and is easy to clean with warm soapy water.

**Product Dimensions:** 8" L x 8" W x 2" H.

**Color:** Black or Casa Tan.



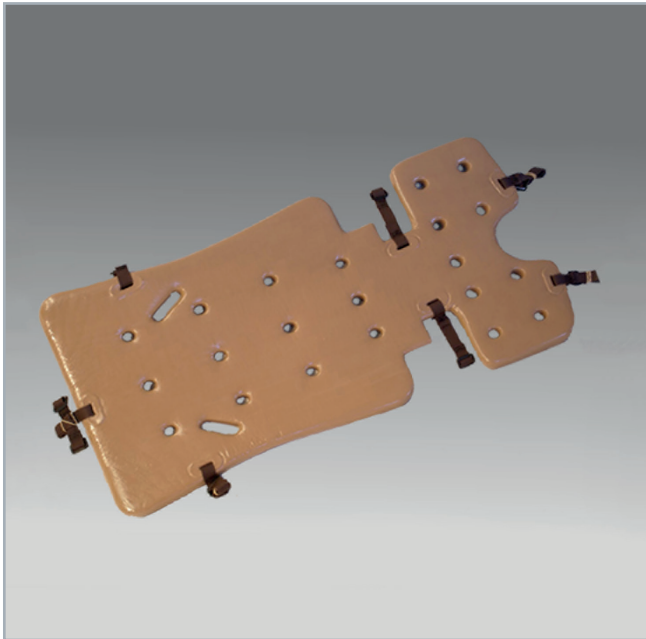
### 6915 ANTI-THRUST CUSHION

Even people with good muscle tone can tire by the end of the day, and using a wedge cushion encourages better posture. This pad has a 3 1/2" high front and tapers to 1" in back, aiding individuals who are prone toward slipping down into a seat. The straps have a buckle adjustment for securing it to a chair. The soft foam is supportive, and our vinyl-coating makes cleaning quick and easy; just wipe with warm soapy water.

**Sizes:** Small - 14" x 14", Medium - 16" x 16", or Large - 18" x 18".

**Color:** Black or Casa Tan.





### 6932 SEAT LINER CUSHION

Professionals have found many different uses for a fully ventilated and waterproof cushion such as this. Have an uncomfortable bath chair? Sizing problems with Feeder Seats? Anticipating a growth spurt? These 1" thick cushions not only add comfort but also can be used to fill in areas by ordering one size larger.

**Sizes:** Medium - 29" L x 15" W and Large - 38" L x 19" W.  
**Color:** Casa Tan.



### 6919 POSITIONING PILLOW

The ultimate orthosis: a really comfortable pillow filled with a foam blend. We cut small squares of foam that gently conform to body shapes and hold position much better than regular pillows. The heavy-duty outside pillowcase zips off for easy washing. Inside, a smooth vinyl pillowcase contains the chunks of foam.

**Sizes:** Small - 20" L x 20" W and Large - 30" L x 20" W.  
**Color:** Forest Green or Hot Pink.



### 6925 PORTABLE ABDUCTOR

Lightweight, useful, and easy to use. This is a handy item for positioning the legs whenever a person is out of his or her seating system. Adjustable, non-removable straps go around each leg, and the curved foam center section cushions the calf, knee, or thigh area.

**Sizes:** Small - 3 1/2" L x 3" W x 4 1/2" H.  
Large - 5" L x 5" W x 6 1/2" H.  
**Color:** Casa Tan, Bright Blue, and Yellow.

## PRODUCTS FOR BUILDING AND REPAIRS



### 4165 QUICK-RELEASE BUCKLE

Side pinch-release opening.

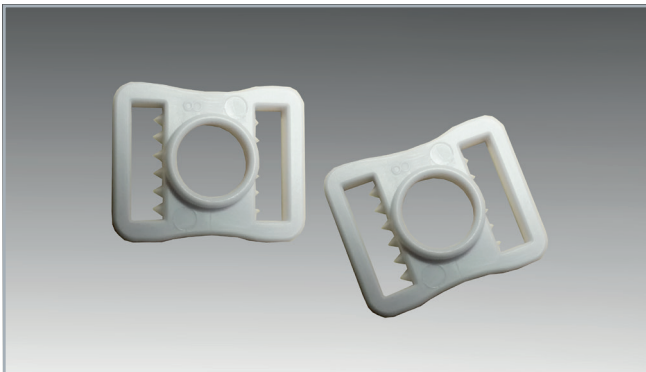
Sizes: 3/4" Black or White. 1", 1 1/2", & 2". - Black only.  
2 per package.



### 4166 SLIDE BUCKLES

Used to position straps.

Size: 3/4" - 6 per package.



### 4170 SNAP BUCKLES

Used to snap onto stud, and has teeth to help secure the strap.

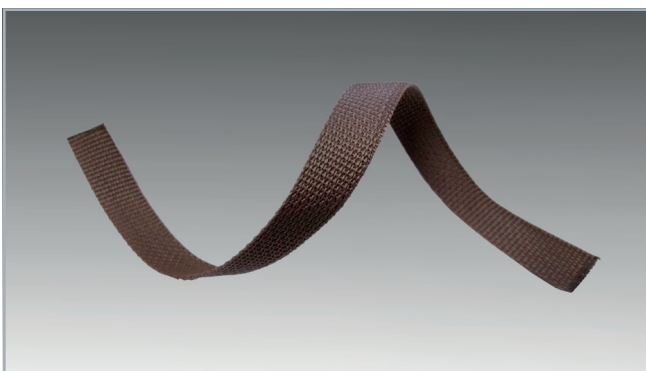
Size: 3/4" - 6 per package.



### 4167 D-RINGS

Used to position straps.

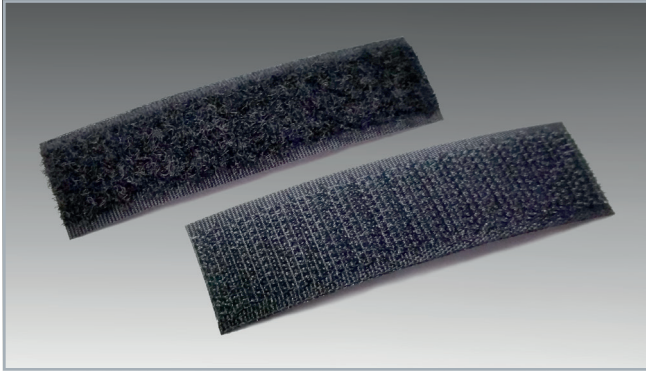
Size: 3/4" - 6 per package.



### 4168 WEBBING

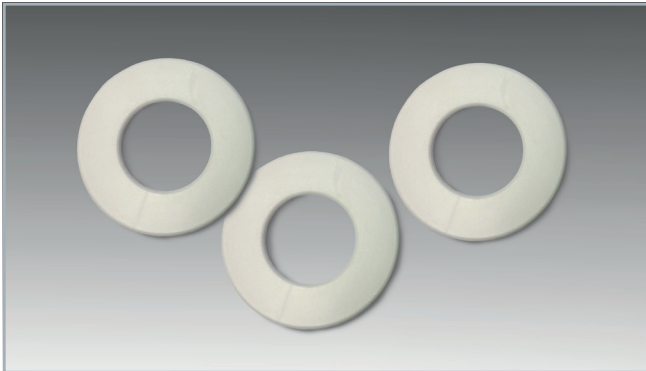
Replacement webbing.

Sizes: 3/4", 1", 1 1/2", & 2" widths.  
Order by the yard, by 50', or 100' rolls.  
Colors: Black or Brown.



### 4169 VELCRO

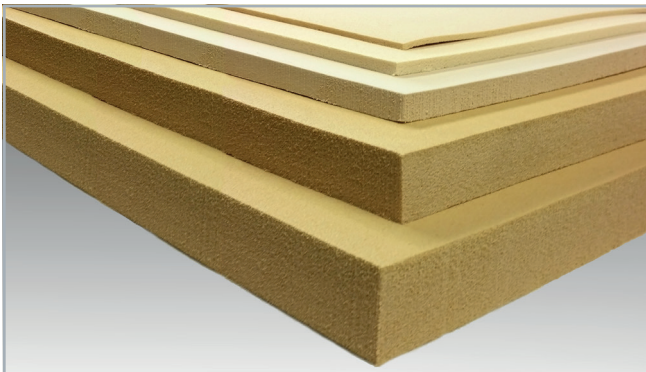
**Sizes:** 3/4" or 1 1/2" Black.  
1 yard includes hook & loop.



### 4163 REINFORCEMENT RINGS

Helps to reinforce foam when punching holes into it.

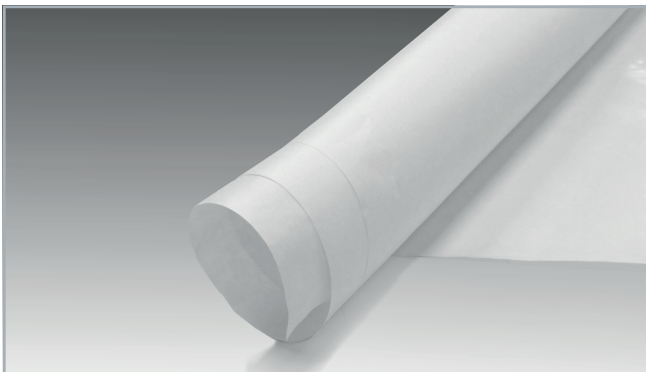
**Size:** 2" disk with a 1" hole.



### 4110 FORMAFOAM

Our closed-cell foam is available in 5 different thicknesses. \* The 1/8" size is referred to as Skinfoam because of the smooth, tough outer surface. Experiment with the different densities to find the right "feel" for your needs. Formafoam can be cut with an electric knife, band saw, jigsaw, or scissors.

**Sizes:** (Thickness) \*1/8", 1/4", 1/2", 1", & 1 1/2".  
**Color:** Natural.  
**Product Dimensions:** 21" x 28", 42" x 28", or 42" x 56".



### 4152 SILICONE PAPER

Used to position straps.

**Size:** 3/4" - 6 per package.

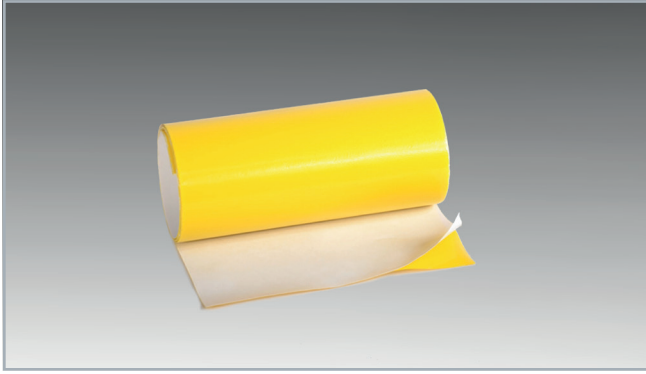


### 5015 COVER ALLS

These adhesive foam discs are handy to have around. They can be placed on sharp corners or hard surfaces, to create an easier "gripped" surface, or coated in vinyl to create waterproof surfaces that are easily cleaned.

**Size:** Bag of 25.  
**Product Dimensions:** 2 3/4" x 3 1/2" x 1/4" each.  
**Color:** Beige.  
**Options:** Foam only, or foam with Fabriccoat.



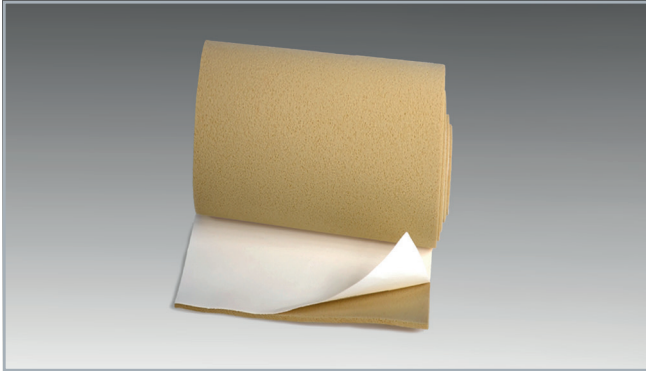


### 4802 VINYLITE TAPE

This is a high performance product-thin yet tough. Three layers of specialty plastics are bonded together to form a material only 0.002" thick. This tape does not shrink, creep, or pull up like more common tapes currently used for vinyl repair, and it offers excellent durability. Vinylite Tape was developed for use in conditions where moisture is present, so it is waterproof and easy to clean. Great for repairs!

**Size:** 4 rolls @ 6" W x 18" L.

**Color:** See color chart (Page 43).



### 4804 FORMAFOAM TAPE

This versatile 1/8" thick, padded tape will bond to vinyl. It can be used with Vinylite Tape (Item# 4802) for repairs or for building up areas of the helmet that need extra padding.

**Size:** 1 roll @ 6" W x 36" L.

**Color:** Natural.



### 4807 TERRY TAPE

If you need a soft layer between our vinyl and your skin, try this Terry Tape. It sticks to our vinyl to create a soft surface without a noticeable difference in the thickness of the foam. Try it anywhere that our products make contact with skin.

**Size:** 1 roll @ 6" W x 36" L.

**Color:** Blue.



### 4150 STRETCH TERRY CLOTH

This poly-cotton blend of stretch terry cloth can be used to create a tougher surface or texture over foam.

**Size:** 36" x 45" Sheet.

**Color:** Gray.



### 4808 MOLESKIN TAPE

This adhesive-backed Moleskin can be used to line any vinyl surface which might come in contact with sensitive skin. Adds softness.

**Size:** 6 Strips @ 3" x 11".

**Color:** Beige.

## PRODUCT INDEX BY ITEM NUMBER

Item #	Description	Page #
3450	Custom Color	43
3451	Patterns	44
3459	Hard Shell Ear Coverings	41
3460	Soft Foam Ear Coverings	41
3461	Face Guard Modifications	40
3462	Extra Long Face Guard	39
3463	Stabilizing Side Tabs	39
3464	Rear Foam Extension	42
3465	Rear Hard Shell Extension	42
3466	Foam Reinforcement	42
3467	Reinforced Seams	42
3468	Foam Visor	41
3469	Quick-Release Buckle Chinstrap	39
3470	Eyeglass Relief Area	38
3471	Ponytail Cutout	41
3472	Helmet Custom Strapping System	39
4110	Formafoam	52
4150	Stretch Terry Cloth	53
4152	Silicone Paper	52
4163	Reinforcement Rings	52
4165	Quick-Release Buckles	51
4166	Slide Buckles	51
4167	D-Rings	51
4168	Webbing	51
4169	Velcro	51
4170	Snap-Buckles	51
4802	Vinylite Tape	53
4804	Formafoam Tape	53
4807	Terry Tape	53
4808	Moleskin Tape	53
5015	Cover Alls	52
6610	Chest Support	16
6611	Clear Chest Support	16
6615	Dynamic Split Clear Chest Support	16
6620	Modular Chest Support	16
6625	Trunk Support Bar	48
6626	Trunk Support System	48

Item #	Description	Page #
6630	C-Collar	49
6635	Extended C-Collar	49
6672	Comfy Cuffs	49
6674	Lap Strap Cover	48
6676	Contour Covers	48
6678	Harness Covers	48
6760	Utensil Handle	29
6762	Therapy Handle	29
6763	Handy Helper	28
6764	Knob Holder	29
6766	Toy Holder	30
6765	New item?	30
6767-A	Combo Utensil Handle & Knob Holder	29
6767-B	Combo Therapy Handle & Knob Holder	30
6768	New Item??	30
6769	New Item???	30
6770	MiBowl Holder	28
6771	MiPlate Holder	28
6772	Replacement MiBowl or MiPlate	28
6775	MiTable Topper	28
6780	MiTable Topper Kit	27
6785	MiMitts	29
6809	Hensinger Head Support w/High Back	15
6810	Hensinger Head Support	14
6815	Hensinger with Mount Bar	47
6818-A	Two-Step Head Support w/Hensinger & Otto Bock Mount w/Headrest	46
6818-B	Two-Step Head Support w/Hensinger & Otto Bock Mount	46
6818-C	Two-Step Head Support with Otto Bock Mount	46
6818-D	Two-Step Head Support- Hardware Only	46
6821	Size Reducers	45
6826	Anterior Head Support	15
6828	Side-Opening Head Support	15
6833	Swirl Collar	15
6833-C	Replacement Lycra Swirl Support Covers	47
6833-E	Swirl Evaluation/Sizing Kit	47

## PRODUCT INDEX BY ITEM NUMBER

Item #	Description	Page #
6850	Toilet Seat Cover w/Reducer Ring	31
6855	Soft Deflector	32
6856	Personal Deflector	32
6858	Privacy Apron	32
6859	J-Clips	33
6860	Changing Pad (Diaper Station)	33
6861	Forehead/Chin Rest	33
6862	Changing Station Kit (Diaper Station)	33
6915	Anti-Thrust Cushion	49
6919	Positioning Pillow	50
6922	Foam Grip Covers	49
6925	Portable Abductor	50
6932	Seat Liner Cushion	50
7630	Face Guard	35
7631	Chinstrap	37
7632	Face Bar Replacement Hardware	35
7633	Crown Pad	34
7634	Liner Pads	34
7635	Liner Cushions	34
7636	Face Bar	35
7637	Cush-In-Pads	34
7638	Padded Back of the Neck Strap	37
7639	Back of the Neck Strap	37
7640	Velcro Chinstrap	37
7641	Chinstrap w/Quick-Release Buckle	37
7642	Face Guard Replacement Hardware	35
7643	Helmet Pad Kit	34
7645	Chinstrap w/Rubber Chin Cup	36
7646	Rubber Chin Cup Only	36
7666	Speedy Rivets	36
7670	Headgear Evaluation Kit	35
7731	Sectional Raft Section w/Snap Rings	24
7732	Delta Crotch Strap	24
7733	Delta or Tri-Swim Neck Collar	24
7734	Dolphin Crotch Strap	24
7735	Swim Rings Replacement Strap	25
7736	Individual Replacement Rings	25

Item #	Description	Page #
7737	Dolphin Replacement Pads	25
7738	Replacement Head Float Strap	25
7901	Hensinger Replacement Covers	45
7902	Hensinger Replacement Straps	45
7903	Quick-Release Mount Plate	45
7923	Lycra Head Support Covers	47
7935	Head Support Evaluation/Sizing Kit	47
8720	Delta Swim System	22
8721	Pad Plus	22
8722	Swim Loops	23
8723	Sectional Raft	21
8724	Swim Rings	20
8725	Head Float	19
8726	Swim Links	23
8727	Dolphin Float System	21
8728	Tri-Swim	22
8729	Stabilizing Bar	20
8730	Comfort Mat	21
8731	Latch and Splash	23
8733	DanBar	24
8735	Head Float w/Mini Stabilizer Bar	20
9708	Soft Top Comfy Cap	9
9709	Hard Top Comfy Cap	9
9817	Halo Helmet	8
9820	Soft Shell Helmet	4
9821	Hard Shell Helmet	5
9822	Hard Shell Helmet w/Face Guard	7
9823	Chin Guard	35
9824	Hard Shell Helmet w/Face Bar	7
9825	Deluxe Hard Shell Helmet	7
9829	Full Coverage Helmet	6
9830	Clear Helmet	8
9836	Newborn Cap	8
9850	Headgear Measurement Tape	36
9910	Soft Top Comfy Cap Butterfly/Camo	9



# Danmar Products

Equipping people. Enhancing lives.



(p) 800-783-1998  
(f) 734-761-8977  
[sales@danmarproducts.com](mailto:sales@danmarproducts.com)

Business Hours are:  
Monday Friday 8 - 4:30 pm. EST  
Office closed from 12 - 12:30 pm (EST) for lunch

221 Jackson Industrial Dr.  
Ann Arbor, MI 48103  
[www.danmarproducts.com](http://www.danmarproducts.com)