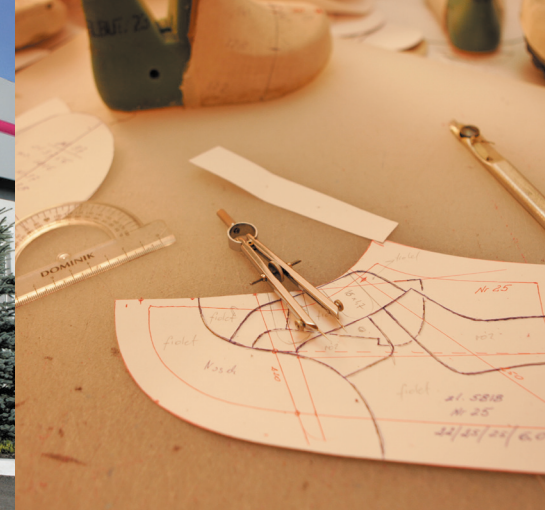




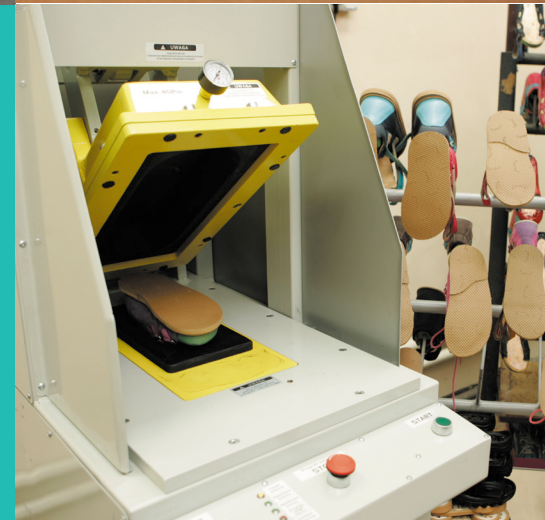
Friendly shoes for your children's feet



Doświadczenie



Jakość



Gwarancja







Our shoes are footwear items intended to protect not yet fully developed children's feet from the external environment (unfavourable weather conditions and hard grounds without shock absorption), support and guide individual motor activity structures and mechanisms in the feet and whole body. In case of foot deformities Aurelka shoes support the rehabilitation, which is a treatment supplement.

We are of the opinion that shoes for children should not be formed inside or have supports under the longitudinal arch of the foot. This makes a development of the longitudinal arch of the foot possible. We do not cause ligaments, tendons and muscles that are responsible for the normal support of the arch of the foot, to "slacken". Such a construction enables a fixation of corrective shoe inserts, if necessary.

We add to each shoe pair padding inserts that improve the use comfort without influencing foot motor activity. The sponge gives additional softness and shock absorption in the heel region as well as an additional support of the valgus heels, especially the thinner ones.



*Presented the colors and shades of leather, may be different in reality. It depends on the dye absorbed by the skin.*

# OUR SHOES AND OUR QUALITY

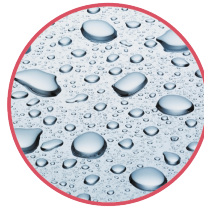


The individual shoes are not the only element that distinguishes our brand from the other ones on the Market. We use in the production finest quality materials with safety attests.





**All our shoes are made of natural leather** and therefore they are more soft, flexible and the leather fits to the foot shape. Leather is a natural environment for the feet.



**Waterproofness** due to the TE-POR membrane (not in every shoe model).



**The heel part is rigid** (only up to the Achilles tendon) in all shoe models.



**There are no seams** inside the shoes, which gives a better comfort feeling without outer skin abrasions..



The shoes are **ultra-light** because of the used materials.



**The appropriate width** gives freedom and enables growth of the little foot.



**The soles produced by the renowned Vibram®** company guarantee elasticity and assist the training of the poorly developed longitudinal arch of the foot in children.



**Due to the special construction it is easy to put the shoes on.** There are available different types of closures: burr adhesion fastener, buckle closure, lace closure, zip fastener.



**It is a natural, breathing** environment for Your child's feet.



**Flexibility** – the shoes bend correctly in a zone that corresponds with the line of the metatarsophalangeal joints.



**Stable behaviour**



Our footwear is certified by the Central Laboratory of Footwear Industry in Cracow and belongs to the group of shoes that have been awarded the **"Healthy Foot" Mark**.



Our shoes are **recommended by Polish and foreign orthopaedists**.

We are specializing in the manufacture of custom personalized shoes.

Everybody can take advantage of this possibility, especially persons with foot dysfunction. Our task is to fulfil, as far as technically possible, expectations of each customer.

# Soles Vibram®

Soles made by the Italian Vibram company are used in our production. We are pioneers in the use of specialized Vibram soles in Poland. The Vibram soles are characterized by a high adherence, durability and abrasion resistance due to the material used in the production and special cut-outs.

## THE VIBRAM® STANDARD SOLE

It is an „intelligent sole”, which fits to the feet. The Vibram Standard soles are characterized by numerous stresses that act like a spring, strain and train the longitudinal arch of the foot. They are flexible, elastic and do not scratch surfaces. Due to their structure Vibram Standard soles can undergo necessary modifications. They are available in the colour beige and black.



## THE VIBRAM® COUGAR SOLE

It is a trekking sole, which proves to be very good under difficult conditions, e.g. on the following grounds: snow, sand or stones. The Vibram Cougar soles are characterized by a high adherence and durability. These soles are also ultra-light.







This brand solutions, such as self-cleaning grooves, rotation zones and anti-slip surfaces guarantee a very high level of use comfort and safety. The Vibram brand sole is one of the most popular and appreciated soles by mountaineers, trekkers and mountain climbers.

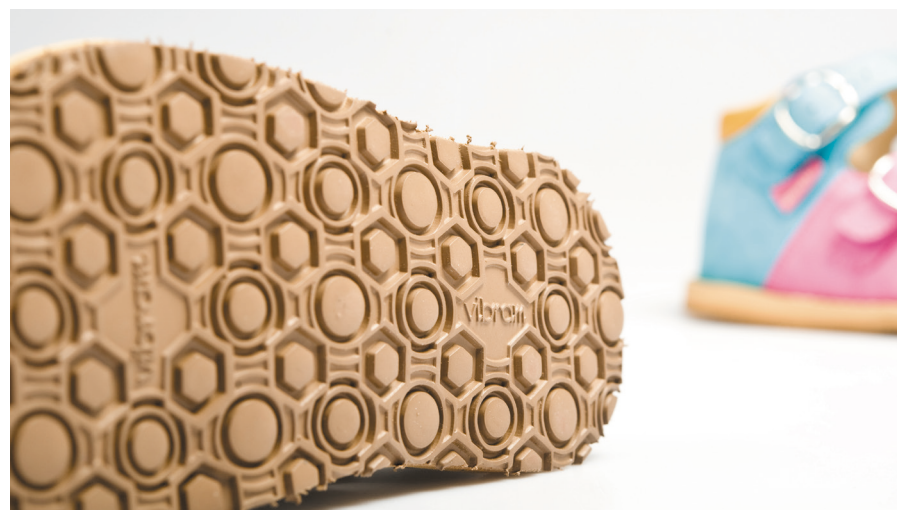
## THE VIBRAM® HAPPY CHILD SOLE

We developed in co-operation with the Vibram company an innovative sole, i.e. the Thomas heel. It is very flexible, elastic and light compared to the other heels made of styrogum that are available on the Polish market. The Vibram Happy Child soles give a unique use comfort.



## THE VIBRAM® SUPER FLEX SOLE

It is a new, more elastic, flexible and light sole. Due to their properties Vibram Super Flex soles are aimed at the youngest age group.







# Binding BOA®

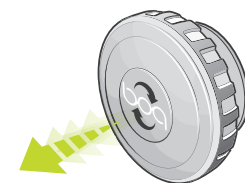
A decade of experience in fitting sports footwear helped to create world's best locking system for prophylactic and orthopedic footwear. In contrast to traditional shoelaces, the BOA binding system does not slide, and perfectly and safely fits the shoe to the foot, which ensures comfort throughout the day.

We are the only manufacturer of footwear in Poland, who won the trust of the American company BOA and implemented the production of shoes with the BOA binding system.

In prophylactic footwear, the BOA system is a combination of two types of fasteners: laces and Velcro. Shoelaces enable to fit the shoe to the foot very well, and Velcro provides fastening convenience.

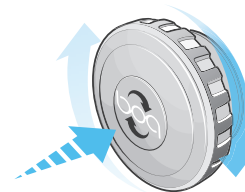
Unfortunately, each of these fastening methods has its drawbacks. With a BOA binding, the child can easily and correctly fasten their shoes on their own, ensuring stabilization of the ankle.

Binding BOA is available in the following models: 1000, 1003, 1011, 1015, 1017, 1018



## OPEN:

Pull the wheel.  
Pull the tab forward  
and loosen the line.



## CLOSE:

Press the wheel  
and turn right.

# The BOA® System with open heel



It allows people with disabilities to use footwear in everyday life in the simplest and safest way. The system enables easy operation with one hand and ensures uniform tension throughout the foot, allowing the footwear to fit perfectly.



The BOA is also designed specifically for kids who wear orthotics, so they can easily put on and take off their shoes.

The company BOA managed to obtain a perfect fit with a simple turn of a wheel, which is far from the use of excessive force, and old-fashioned fasteners. This fastener form has both a significantly higher level of comfort, and is durable, lightweight, fast and convenient to use as well. Manufacturer of the BOA fasteners gives a lifetime warranty on its products.



1031



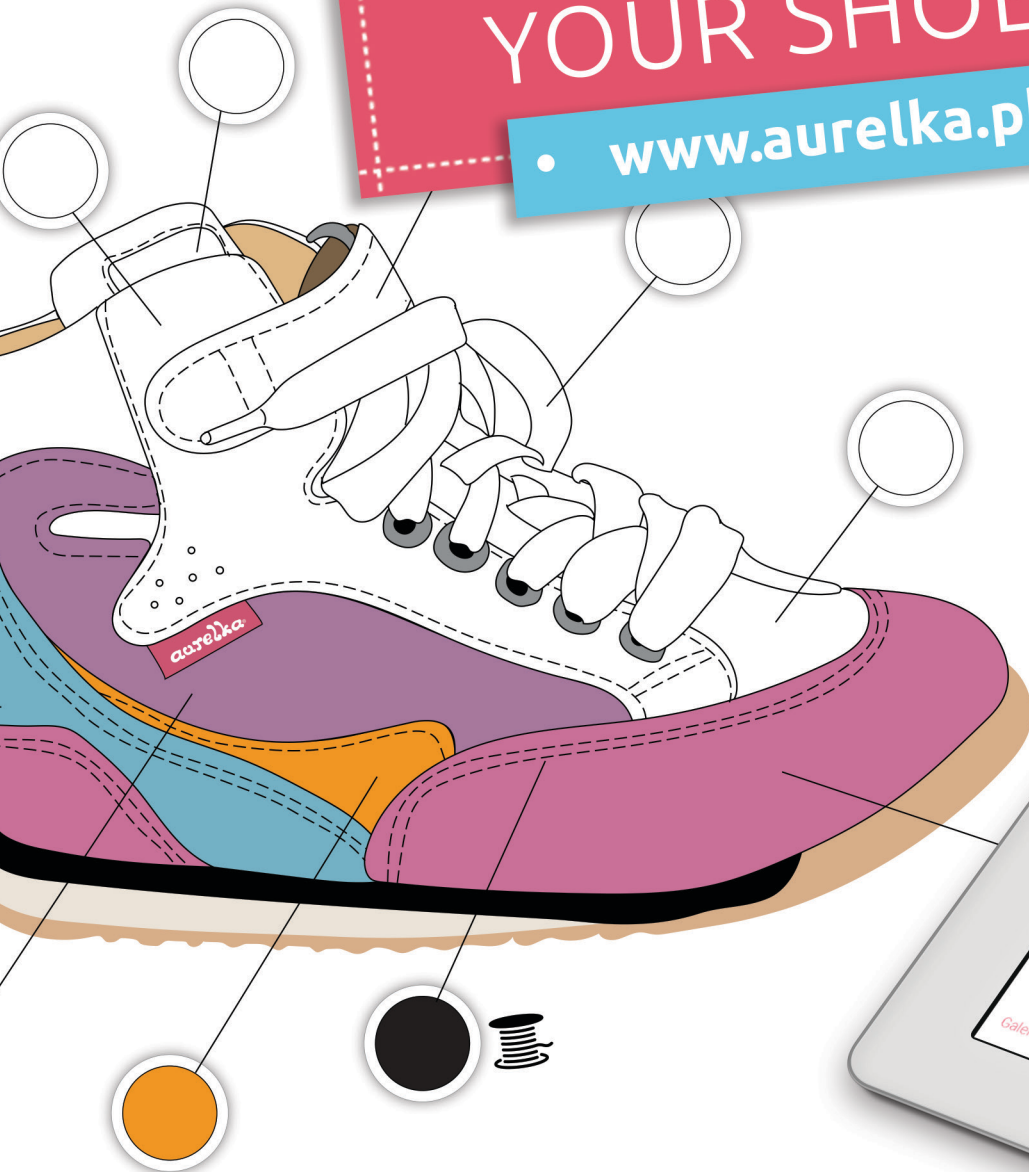
A PERFECT SOLUTION FOR  
ORTHOTIC SHOES



Honorary Prize of the 23rd  
International Fair of Rehabilita-  
tion Equipment in 2015

# DESIGN YOUR SHOES

• [www.aurelka.pl](http://www.aurelka.pl) •





Binding BOA is available in the following models



20  
30

1000 BOA/01



20  
42

1003 BOA/01



20  
42

1011 BOA/01



26  
42

1015 BOA/01



31  
42

1017 BOA/01



20  
42

1018 BOA/01



Shoes for a start



# 1014

## HOME BOOTIES

This model works well as slippers for home and preschool usage. May be treated as summer shoes for kids. Provides comfort of use and allows the proper development of small feet.



18  
30



Ob.  
Thomasa



# 1000

## HOME BOOTIES

This model works well as slippers for home and preschool usage. May be treated as summer shoes for kids. Provides comfort of use and allows the proper development of small feet.

18  
30



Ob.  
Thomasa



/01



/06



/07



/08



/10



/11



/12





# 1027

## Home Booties

This model works well as slippers for home and preschool usage. May be treated as summer shoes for kids. Provides comfort of use and allows the proper development of small feet.

18  
30



vibram

Ob.  
Thomasa



/01



/02



/03



/04



/05



/06



# 1028

## Home Booties

This model works well as slippers for home and preschool usage. May be treated as summer shoes for kids. Provides comfort of use and allows the proper development of small feet.



18  
30



Ob.  
Thomasa





Slippers / Summer shoes



# 1002

## CHILD-YOUTH BOOTIES

These shoes are destined for domestic use, may also be used as summer shoes. Specialized design ensures correct positioning of the child's feet, preventing thus the formation of lower limbs defects. This model is adapted to corrective inserts and orthopedic alterations.



/14

20  
43



Ob.  
Thomasa



/01



/09



/12



/13



/15



/16



/18



/19



# 1003

## CHILD-YOUTH BOOTIES

These shoes are destined for domestic use, may also be used as summer shoes. Specialized design ensures correct positioning of the child's feet, preventing thus the formation of lower limbs defects. This model is adapted to corrective inserts and orthopedic alterations.

/13



20  
43



vibram.



Ob.  
Thomasa





# EL-BUT SYSTEM



Many years of experience gained on research into children's feet allowed our company to develop a model of shoe that allows wide applications for many feet defects. We work closely with orthopedists from Poland and Austria. Using their wide experience we are constantly working with shoes to bring the expected result of partial or complete recovery from bad posture. We use the knowledge of specialists from the Institute of Leather Industry in Łódź, Department Krakow (former CLPO). In such way has come into being the EL-But System.

## 1. The set of the "EL-BUT SYSTEM" consists of:

- A Children's sandal - model 1003 from the collection "Aurelka" ;
- A prophylactic soft insert with double-sided tape to stick the supports into the shoe.
- A support for supinating or proning of the backfoot, destined for children with abducted or adducted feet.
- A support for the supinating backfoot in conjunction with support of the longitudinal arch of the foot and immersion under the heel, destined for children with flat-valgus feet.

**An EL-BUT SYSTEM consisting of a series made of semi-finished products - one design of footwear and four types of shoe supports to create individual orthopedic footwear based on the following assumptions :**

- Imbalanced leg growth, valgus or varus tarsus, flat or flat-valgus feet are relatively frequently occurring defects and deformities of the lower limbs in children.
- In most cases, they do not require the implementation of made-to-measure orthopedic shoes.
- Footwear and inserts are manufactured in series (assemblies) performed on the same equipment, allowing the production of items with a specific, repeatable quality.
- Inserts with various construction and sizes offer the possibility of a good, individual fit to the patient's needs, as determined by an children's orthopaedist.
- A significant reduction in the working time of an orthopedic technician, along with the required measurements for the provision of shoes allows us to shorten the waiting time for supply to the patient, which in the case of developing children (during which occurs significant resizing of feet in a relatively short period of time) is very important.

The EL-BUT SYSTEM it is the highest quality as evidenced by the positive opinion of the Institute of Leather Industry in Łódź, Department Krakow (former CLPO).



IPS ŁÓDŹ

AKREDYTOWANA JEDNOSTKA  
CERTYFIKUJĄCA WYROBY  
OŚRODEK CERTYFIKACJI



AC 055

ZNAK IPS Wyrób Ekologiczny



AKREDYTOWANE LABORATORIA  
LABORATORIUM GARBARSTWA  
LABORATORIUM OBUWIA



AB 033

Institute of Leather Industry in Łódź has a guarantee of insurance TUR WARTA S.A., covering the issued certificates, results of tests, and the results of the control of the production of the object of the test.



Oddział posiada wdrożony system zarządzania jakością w zakresie projektowania i realizacji usług badawczych i szkoleniowych dla przemysłu skórzanego.

członek



JEDNOSTKA PRZYNAJĄCA  
ZASTRZEŻONE ZNAKI





# 1012

## CHILD-YOUTH BOOTIES

These shoes are destined for domestic use, may also be used as summer shoes. Specialized design ensures correct positioning of the child's feet, preventing thus the formation of lower limbs defects. This model is adapted to corrective inserts and orthopedic alterations.

20  
43



vibram

Ob.  
Thomasa



# 1013

## CHILD-YOUTH BOOTIES

These shoes are destined for domestic use, may also be used as summer shoes. Specialized design ensures correct positioning of the child's feet, preventing thus the formation of lower limbs defects. This model is adapted to corrective inserts and orthopedic alterations.





# 1016

## CHILD-YOUTH BOOTIES

These shoes are destined for domestic use, may also be used as summer shoes. Specialized design ensures correct positioning of the child's feet, preventing thus the formation of lower limbs defects. This model is adapted to corrective inserts and orthopedic alterations.

20  
43



vibram.

Ob.  
Thomasa



/01



/02



/07



/08



/09



/10



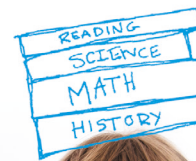
/11



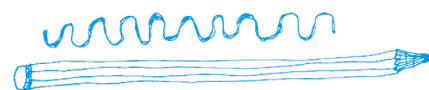
/12







1+1=2



## CHILD-YOUTH BOOTIES

These shoes are destined for domestic use, may also be used as summer shoes. Specialized design ensures correct positioning of the child's feet, preventing thus the formation of lower limbs defects. This model is adapted to corrective inserts and orthopedic alterations.



/14



/01



/05



/09



/11



/13



/15



/16



# 1004

## Sandal 'Safari'

A summer sandal having a reinforced heel-band and an elastic insert provides comfort in use during summer days and allows the proper development of small feet.

20  
42



vibram







# 1005

## Girls shoe

Very elegant and practical shoes for girls. Each small "fashion model" will want to have them. Provide comfort and allow the proper development of small feet.

20  
35



Ob.  
Thomasa



# 1006

## Girls shoe

Very elegant and practical shoes for girls. Each small "fashion model" will want to have them. Provide comfort and allow the proper development of small feet.



20  
35



vibram

Ob.  
Thomasa







# 1007

## Girls shoe

Very elegant and practical shoes for girls. Each small "fashion model" will want to have them. Provide comfort and allow the proper development of small feet.



/06

20  
35



Ob.  
Thomasa



/01



/02



/03



/04



/07



# Autumn / Spring shoes



# 1008

## MOKASYN

Fantastic shoes for spring, summer and autumn. Lace for easy fit footwear for every feet. Very light, flexible and comfortable shoes. Provide comfort in use and allow the proper development of small feet.

18  
35



vibram



/10



/01



/02



/05



/06



/07



/08



/09





# 1010

## MOKASYN

Fantastic shoes for spring, summer and autumn. Lace for easy fit footwear for every feet. Very light, flexible and comfortable shoes. Provide comfort in use and allow the proper development of small feet.

18  
35



/08



/01



/05



/06



/07



/09



/10



/11



# 1001

## CHILDREN-YOUTH BOOTIE

Shoes destined for autumn and winter walks and cool spring days. Provide comfortable use and allow the proper development of small feet.

20  
42



Ob.  
Thomasa



/10



/02



/08



/13



/14



/15



/16



/18



/19

# 1011

## CHILDREN-YOUTH BOOTIE

Shoes destined for autumn and winter walks and cool spring days. Provide comfortable use and allow the proper development of small feet.



20  
42





# 1024

## BROGUE

Elegant shoes for the little Gentleman. Made in full, including the sole, from the highest quality leather. They are great for festive occasions. Provide comfort in use during summer days and allow the proper development of small feet.

26  
36



vibram



# 1029

## Sport shoe „Indoor“

Super trendy sport shoes. Perfect for sports, have a reinforced heel-band and flexible non-slipping sole, and, thus they function very well both in the gym and on the ground. They provide comfort of use and proper development of the feet.



/04

20  
42



Ob.  
Thomasa



/01



/02



/03



/05



/06



/07



# Winter footwear



# 1018

## CHILDREN-YOUTH BOOTIE "BOXERS"

Very comfortable and fashionable shoes, perfectly suited for spring playtimes outside, and autumn walks. They provide comfortable use and allow proper development of the feet. Ideal for orthopedic alterations.



/09



/01



/08



/10



/11



/12





# 1021

## CHILDREN-YOUTH BOOTIE "BOXERS"

Very comfortable and fashionable shoes, perfectly suited for spring playtimes outside, and autumn walks. They provide comfortable use and allow proper development of the feet. Ideal for orthopedic alterations.

20  
42



Ob.  
Thomasa



/09



/08



/10



/12



/13



/14



/15



/16



## THE LININGS AND WARMING ELEMENTS

It is a natural lining made of split cowhide leather, which gives 30% greater air exchange - "the feet can breathe".

### The Te-POR® MEMBRANE

This membrane is joined with a synthetic sheepskin – a waterproof and breathing material. The TE-POR membranes enable draining off sweat, which improves the hygienic parameters. They protect against external moisture. The TE-POR membranes are placed inside the shoes between the lining and the superficial layer.

### The fur of sheep



One of the forms of isolation and cumulative heat, a thick structure. Do not have a waterproof properties.

### Microfiber (insulation)

The human body uses energy to maintain body temperature. Microfiber structure, helps maintain and retain heat inside the shoe. It provides warmth while maintaining air circulation and hydrophobic properties. Most commonly used in footwear transition. Recommended for people with excessively overheated feet.





# 1020

## Cossack - High boots

Comfortable shoes for autumn and winter fun outside. Soft fur warms small feet on cold winter days, providing comfort use and allows the proper development of feet.

20  
42



Ob.  
Thomasa



/06



/01



/03



/04



/07



/08

# 1022

## Cossack - High boots

Comfortable shoes for autumn and winter fun outside. Soft fur warms small feet on cold winter days, providing comfort use and allows the proper development of feet.



/01

20  
42



/02



/08



/09



/10





# 1017

## CHILD BOOTIE „BOVVER“

Comfortable shoes for cold autumn and winter days. They perform very well in difficult weather conditions. They provide comfortable use and allow the proper development of feet.

31  
42



Ob.  
Thomasa



/06



/01



/02



/07



/08



/09









# 1019

## CHILD BOOTIE „BOVVER“

Comfortable shoes for cold autumn and winter days. They perform very well in difficult weather conditions. They provide comfortable use and allow the proper development of feet.



/07

31  
42



/01



/08



/09



/10



/11



/12



/13



# Sports shoes



# 1009

## SPORT SHOE

Super fashionable sport shoes for every season. Perfect for practicing sports, supporting the hock joint, thus they are ideal for gymnastic lessons. They provide for comfort of use and proper development of the feet.



/15

26  
42



/03



/09



/11



/12



/13



/14



/16



# 1015

## SPORT SHOE

Super fashionable sport shoes for every season. Perfect for practicing sports, supporting the hock joint, thus they are ideal for gymnastic lessons. They provide for comfort of use and proper development of the feet.

26  
42



Ob.  
Thomasa



/11



/01



/06



/07



/08



/09



/10



/13







# 1025

## SPORT SHOE „INDOOR“

Super trendy sport shoes. Perfect for sports, have a reinforced heel-band and flexible non-slip sole, and, thus they function very well both in the gym and on the ground. They provide comfort of use and proper development of the feet.

20  
42



vibram

Ob.  
Thomasa



/12



/08



/09



/10



/11



/14

# 1026

## SPORT SHOE „INDOOR"

Super trendy sport shoes. Perfect for sports, have a reinforced heel-band and flexible non-slip sole, and, thus they function very well both in the gym and on the ground. They provide comfort of use and proper development of the feet.



/07

20  
42



Ob.  
Thomasa



/08



/09



/10



/11





# 1030

## Sport shoe „Indoor“

Super trendy sport shoes. Perfect for sports, have a reinforced heel-band and flexible non-slipping sole, and, thus they function very well both in the gym and on the ground. They provide comfort of use and proper development of the feet.

20  
42



vibram

Ob.  
Thomasa



/01



/02



/03



/04

# THE DENIS BROWN BAR

A splint of regulated length to connect both feet is matched to the selected model. Using the key you can adjust the position of the feet at an angle of 0-45 degrees, pronating or supinating them.

Recommended for nightly correction in cases of clubfoot, valgus heel or torsional deformities of the lower limbs.

## The set includes two rails

- with a maximum length of 20.5 cm, and the minimum of 5.5 cm
- with a maximum length 38 cm, and the minimum of 21 cm.

Type of footwear and its size are selected individually.





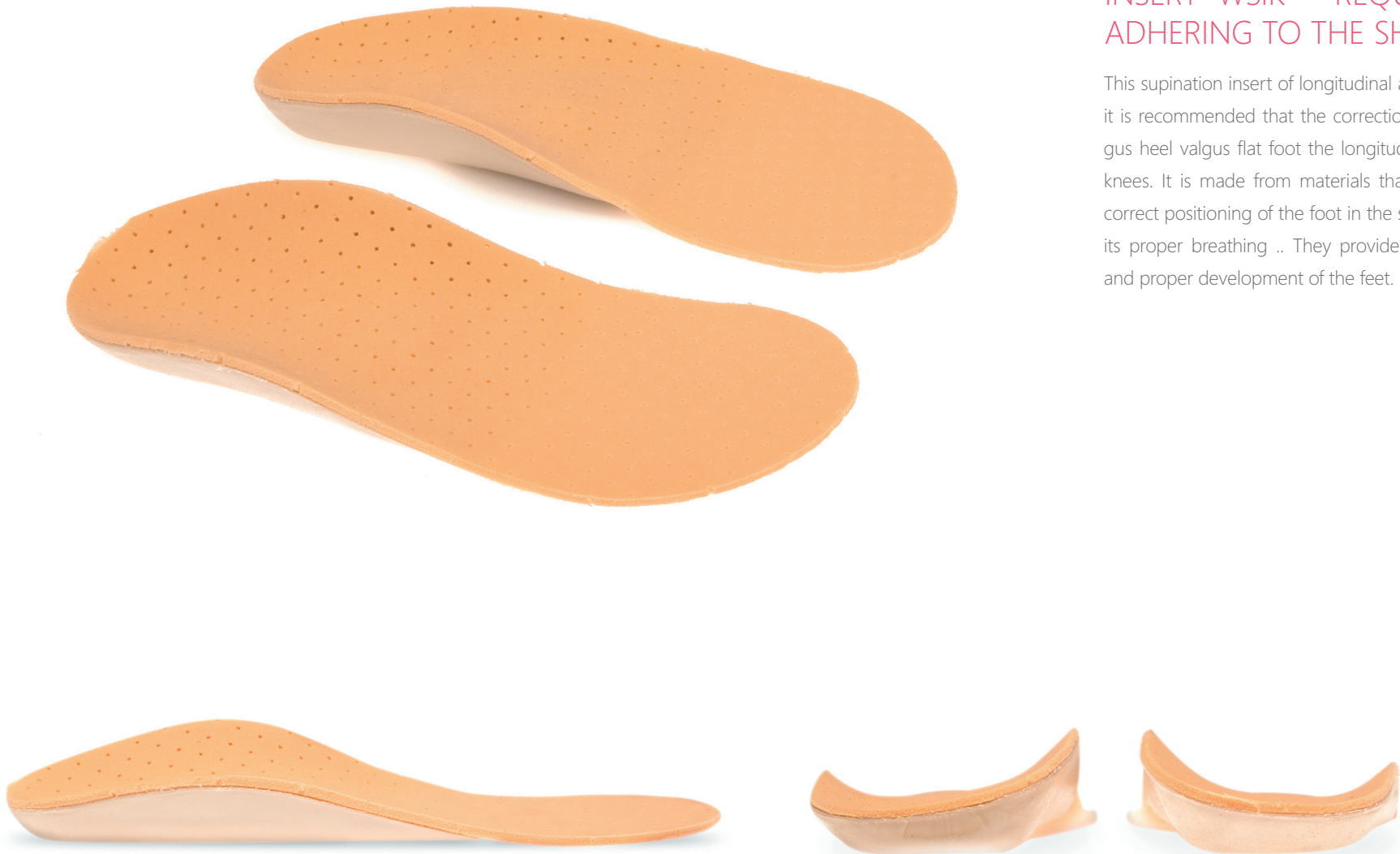
# Inserts



## INSERT WSiK - REQUIRES ADHERING TO THE SHOE

This supination insert of longitudinal arch feet, it is recommended that the correction of valgus heel valgus flat foot the longitudinal and knees. It is made from materials that enable correct positioning of the foot in the shoe and its proper breathing .. They provide comfort and proper development of the feet.

20  
40





## CHANNEL-SHAPED INSERTS

This supination insert of longitudinal arch stabilizes also the heel of the foot. It is recommended for correction of valgus hindfoot, *plaskostopiu* longitudinal and valgus knees with a deep rear heel. It is made from materials that enable correct positioning of the foot in the shoe and its proper breathing.

20  
36



# WSP

## SUPPORT FOR THE SUPINATORING HEEL

This supination insert is recommended for correction of valgus heel. It is made from materials that enable correct positioning of the foot in the shoe and its proper breathing.

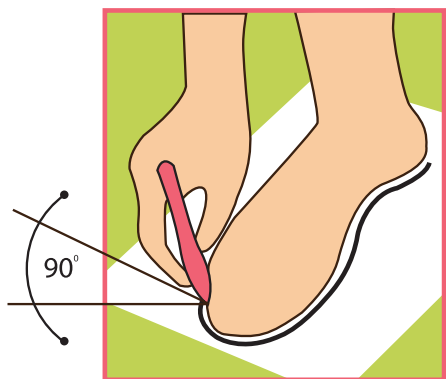
20  
40





# HOW TO CHOOSE THE RIGHT

Good shoes are selected for the foot of a particular child - foot length is only one of elements in choosing a proper shoe. A very important element is the width of the foot, a vaulted longitudinal arch, the heel position and hock joint stability. It is necessary not only to see the feet in a standing position, but also to observe how they look when walking barefoot and in some shoes. Choosing the wrong size destroys the optimum properties of feet even in the best shoes. Usually, due to the rapid increase in the foot size of the child you can select a maximum of one shoe size larger than the size of the foot, (optimally about  $\frac{1}{2}$  of one size)..

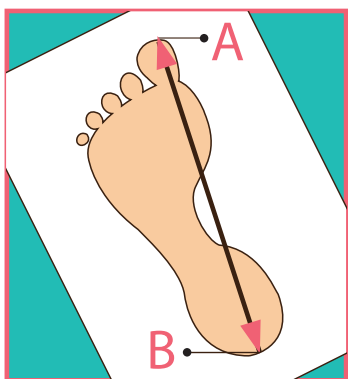


To measure the size of the foot you should follow these instructions.

1. Standing on a sheet of paper you draw each contour of the circumference of the foot.

To draw the foot properly you should hold a pencil at a right angle to the foot.

2. Measure the distance between the outermost points in the figure (A and B). You shouldn't add more millimeters than we give in the next table.



The proper process of measuring the feet is very complicated. The best thing for this purpose is to use the assistance of an orthopedist or trained sales assistants.

**Numbering, the volume rate in cm**

Nummering	Length insert in cm
18	12,3
19	12,8
20	13,7
21	14,3
22	15
23	15,5
24	16,3
25	16,9
26	17,5
27	18,2
28	19
29	19,6
30	20,2
31	21
32	21,7
33	22,2
34	23
35	23,4
36	24,2
37	24,8
38	25,5
39	26,2
40	26,9
41	27,5
42	28,4
43	28,8

## NOTE





P.P.H. "EL-BUT" S.C.  
06-500 Mława  
ul. Instalatorów 2

Tel./Fax +48 (23) 655-13-86  
mobile: +48 509-455-856  
e-mail: [info@aurelka.pl](mailto:info@aurelka.pl)

[www.aurelka.pl](http://www.aurelka.pl)